



Captain John Benedict





ALTADENA NEIGHBORHOOD NETWORK

- According to the National Center for Victims of Crime, crimes have a lasting effect on communities as well as individuals
- A neighborhood watch program can help to decrease crime and bring a neighborhood together

What is a Neighborhood Watch Program?

- According to the USAONWatch.org, the national Neighborhood Watch Organization and a part of the national Sheriff's Association, a neighborhood watch allows citizens to help in the fight against crime and offers an opportunity for communities to bond through service.



ALTADENA NEIGHBORHOOD WATCH MISSION STATEMENT

- The mission of the program is to report suspicious and criminal activity in order to create a secure and safe environment for all residents of the Altadena community.
- The Altadena Neighborhood Watch Program is organized and facilitated by a Block Captain and members of each Neighborhood Watch group, supported by the Crime Prevention Unit of the Altadena Sheriff's Station.

CRIMINALS
TAKE
NOTICE...
BLOCK
WATCH
IN EFFECT



What is Neighborhood Watch?

- A community involvement program with residents, in conjunction with the area's respective law enforcement agency (Altadena Station).
- Neighbors "getting to know" one another and working together toward one goal.
- Neighbors recognizing and reporting suspicious activities in their neighborhood.





What is Neighborhood Watch (Con' t.)



- Neighbors sharing information and communicating (Internet/electronic communication methods, phone tree, social gatherings, news letters, etc.).



- A positive relationship between residents and law enforcement.



- Neighborhood Watch is a program where residents take a proactive approach in the detection and prevention of crime.



What Neighborhood Watch is Not!

- Neighborhood Watch is not a group of vigilantes or people taking the law into their own hands.



- Neighborhood Watch residents do not take the place of deputy sheriff's.
- Be a good witness!
- Call the Altadena Sheriff Station to report suspicious activity



Who May Participate?

- Any law-abiding person within a community.
- Neighborhood Watch members range from children to seniors.
- No age group is exempt from the responsibility of preventing or detecting crime.
- Everyone can contribute.



Getting Organized!!!

- A Watch group can be formed around any geographical unit: a block, apartment building, business area, public housing complex and office.
- Select a coordinator and block captains who are responsible for organizing meetings and relaying information to members.

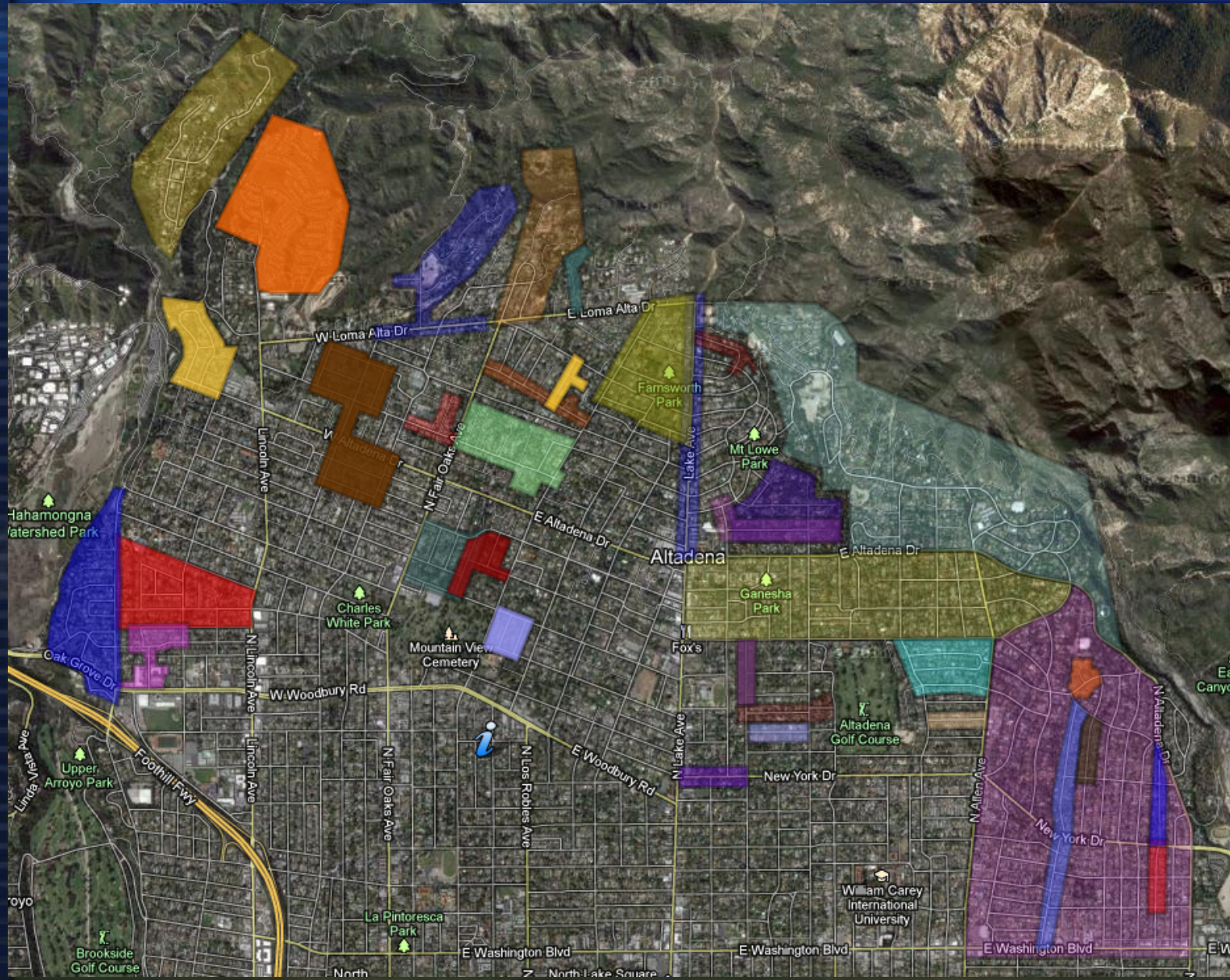


Getting Organized (Cont.)

- Recruit members
- Stay up-to date on new residents
- Work with County government and law enforcement to put up Neighborhood Watch signs.
- Get everyone involved (Seniors, working parents, and young people)

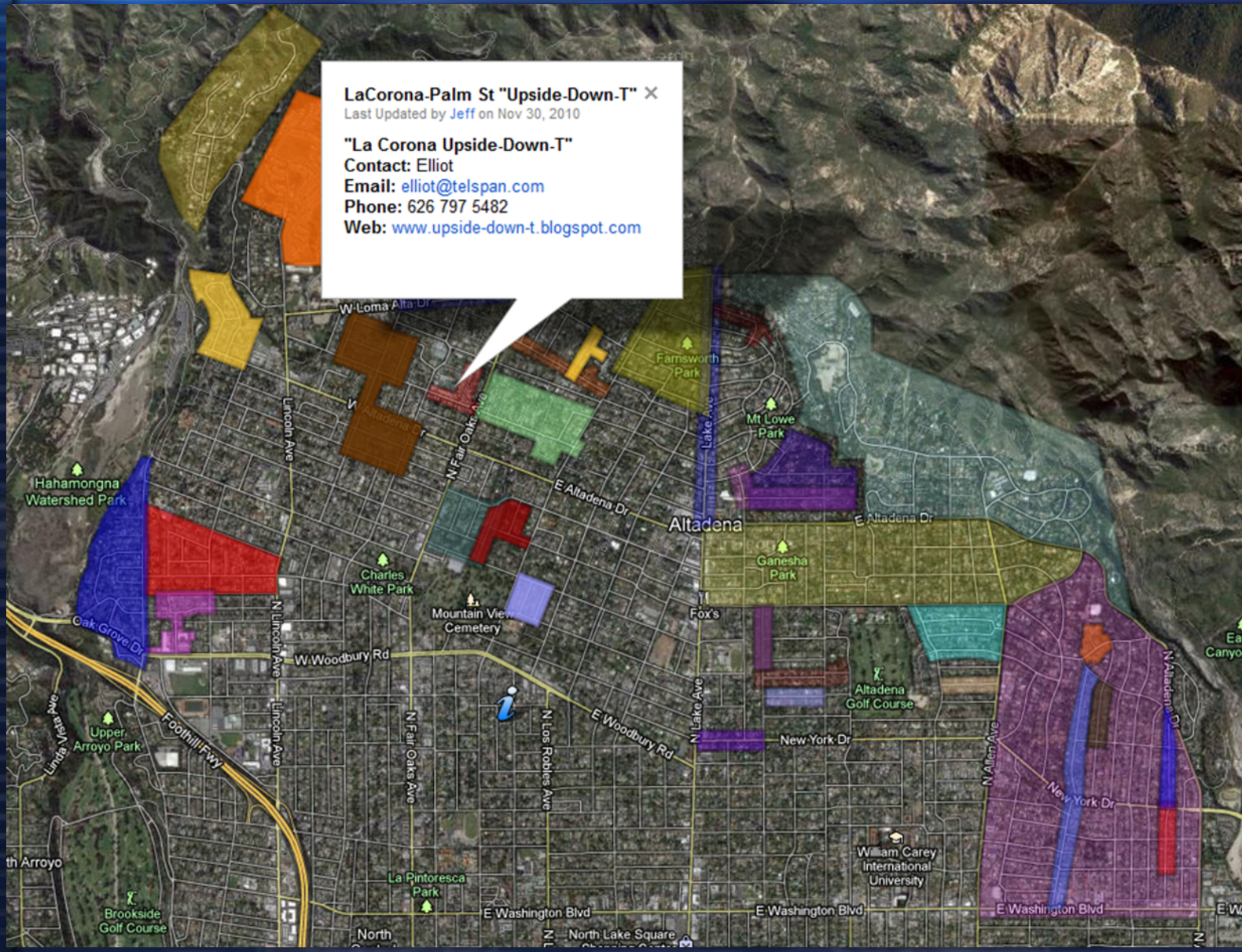


Electronic Neighborhood Watch Map





AltadenAlert.org





Building a Neighborhood Watch Group

1. Check AltadenAlert.org for an existing group
2. Form Founding Committee
3. Meet with LASD Community Relations
4. Define Boundaries
5. Create Discussion Group/Blog/Site
6. Add Guidelines & Resources
7. Distribute Fliers & Recruit Members
8. Recruit Sponsors for the Computerless
9. Add Emergency Contact List
10. Post Alerts and Security Info
11. Grow Your Group



Stay Involved !!

- Organize regular meetings
- Organize community patrols
- “Adopt an area” Pick up litter, remove graffiti, take ownership
- Publish a community newsletter
- Neighborhood social events-maintain the interest of the involved.



Important Numbers

- Altadena Sheriff's Station (626) 798-1131
- Altadena Sheriff's Station Crime Prevention/
Community Relations office
(626) 798-1131 ext. 2105 or 2106