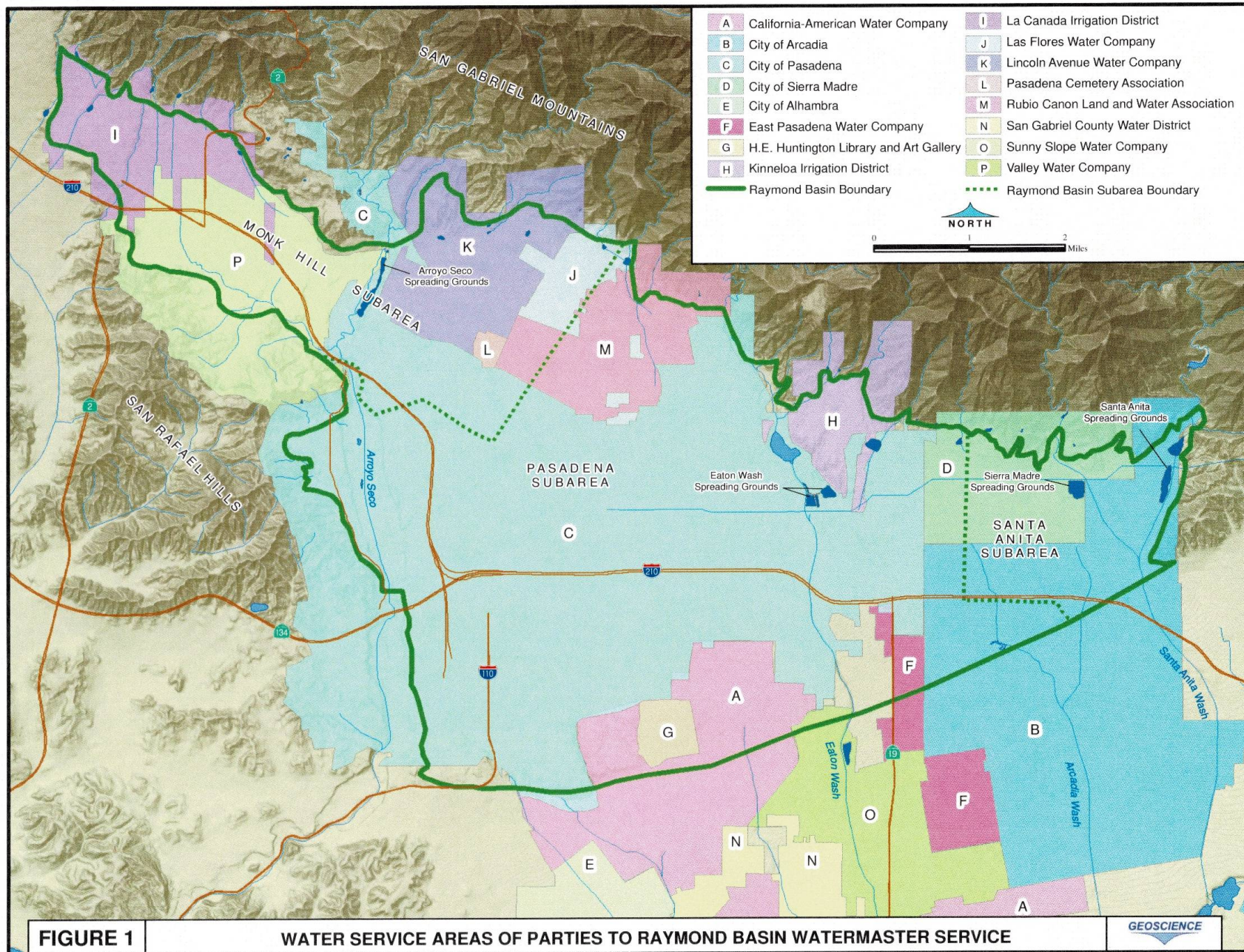


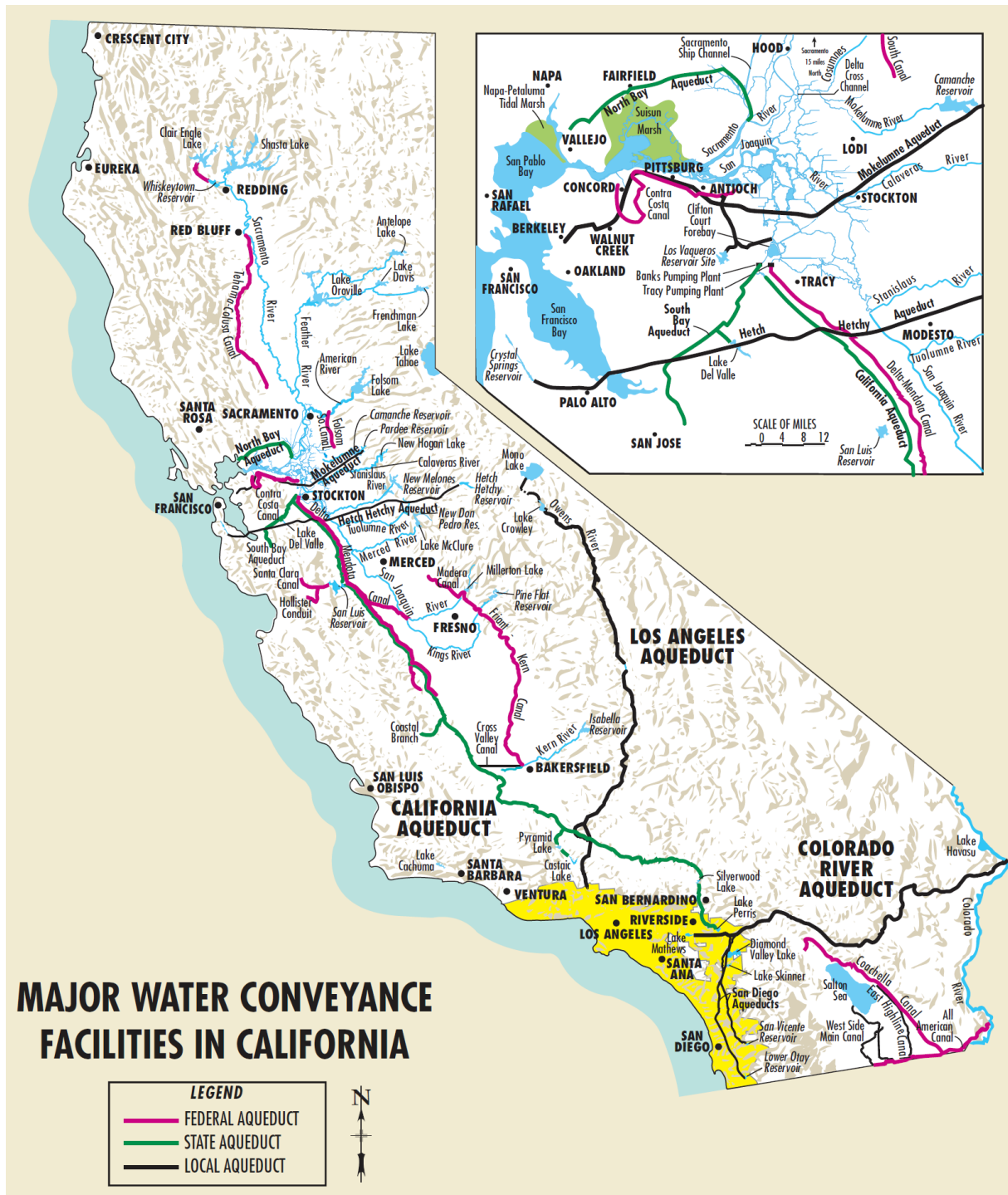


Water Supply Update

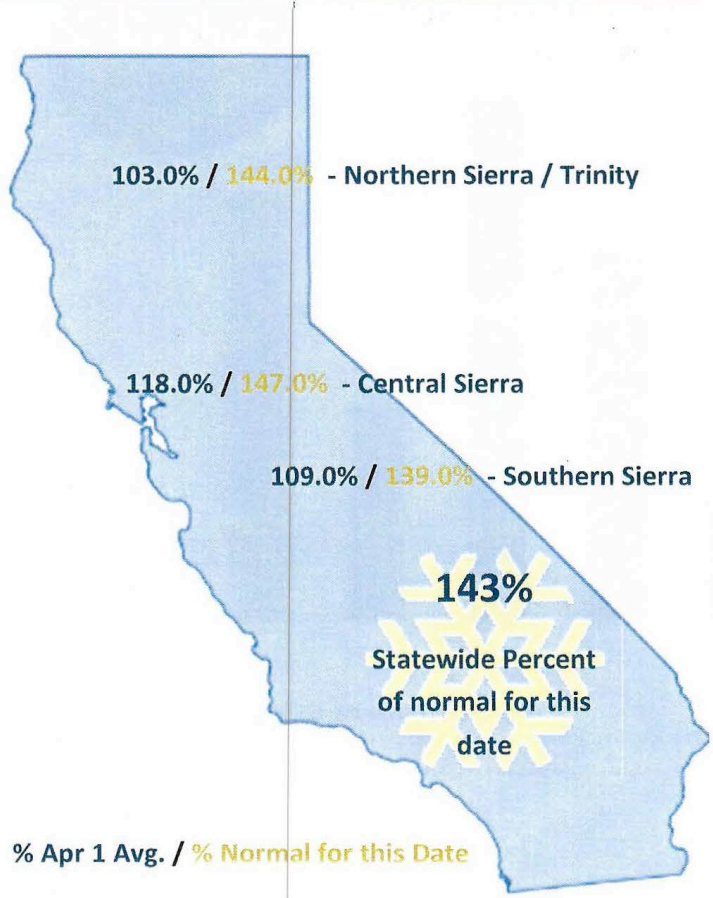
ACONA May 28, 2019

- Where does Altadena's water come from and who are the agencies involved in delivering water to you home?
- Is the 7-year drought over?
- Who regulates public water systems?
- Who regulates water quality and establishes maximum contaminant Levels (MCL's) and public health goals?
- What are the current and future conservation restrictions?

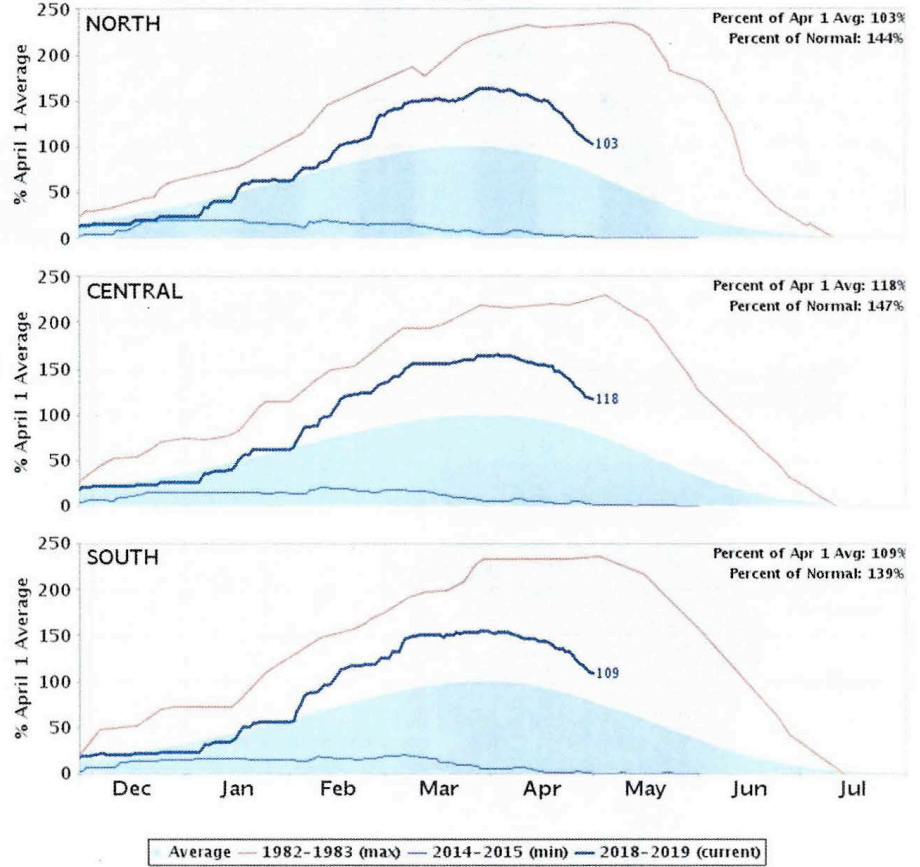




CA Snow Water Equivalent Report

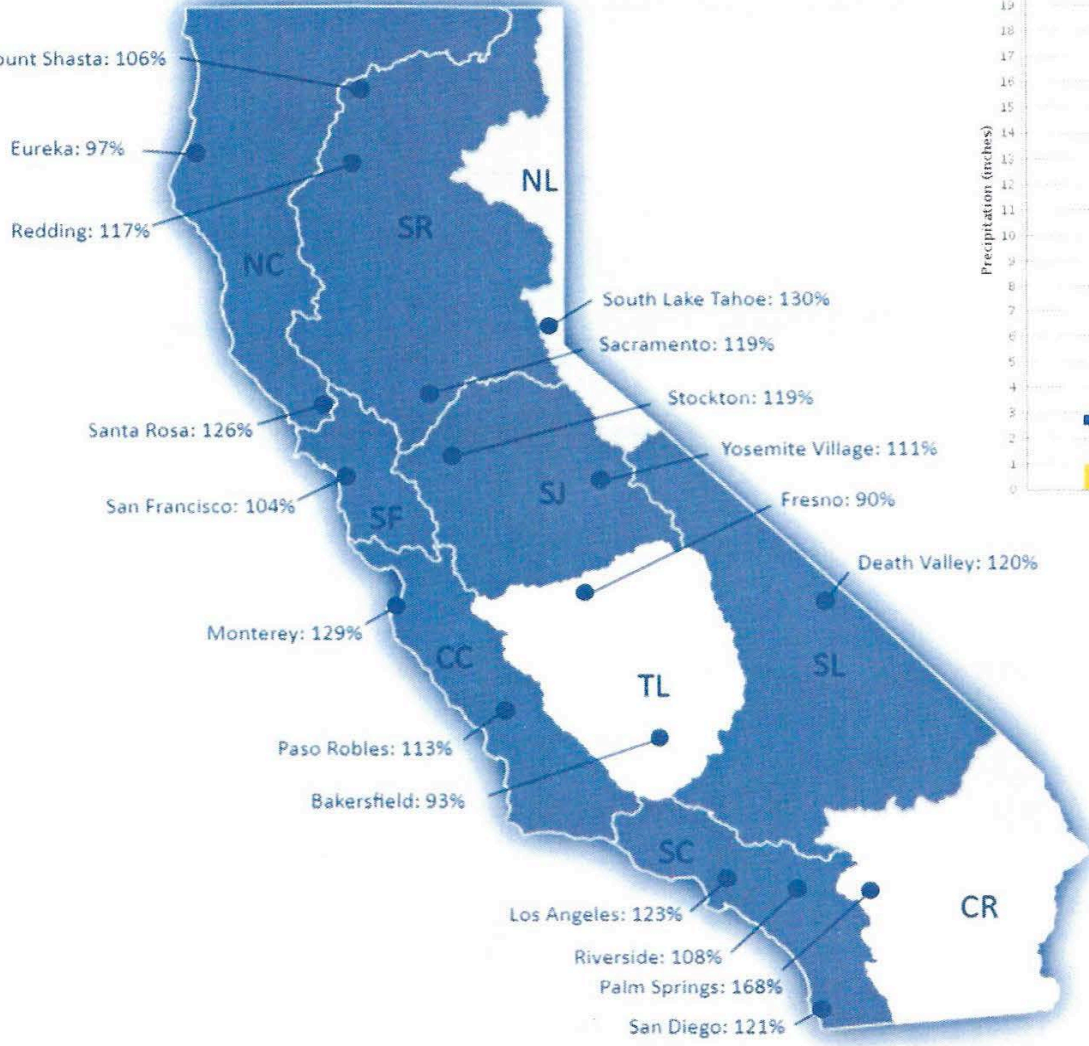


California Snow Water Content - Percent of April 1 Average For: 01-May-2019



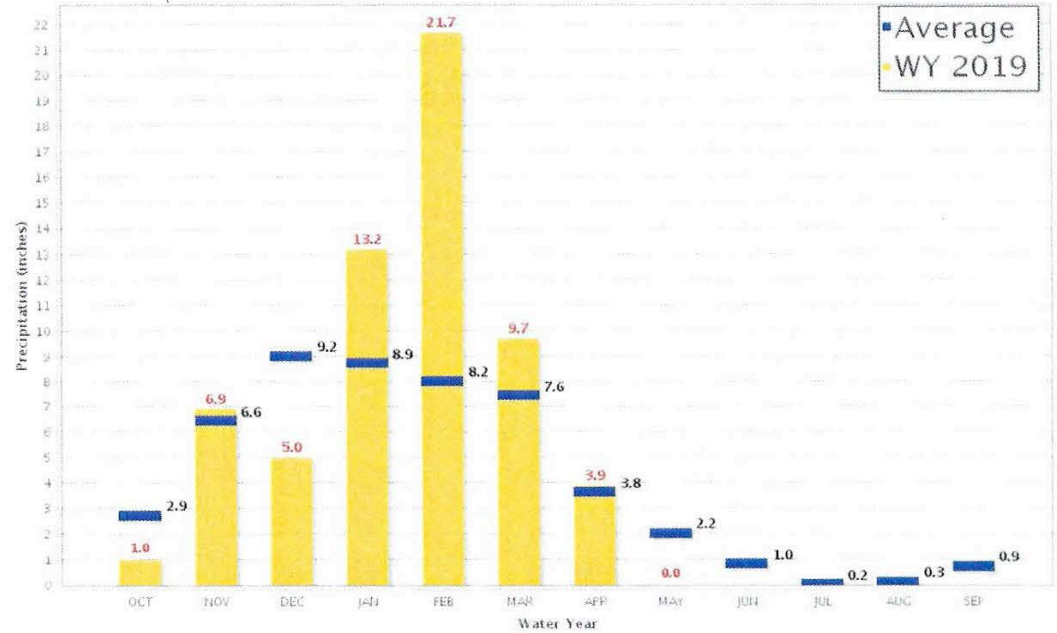
Statewide Precipitation

City: % of Normal Precip (Since Oct. 1)

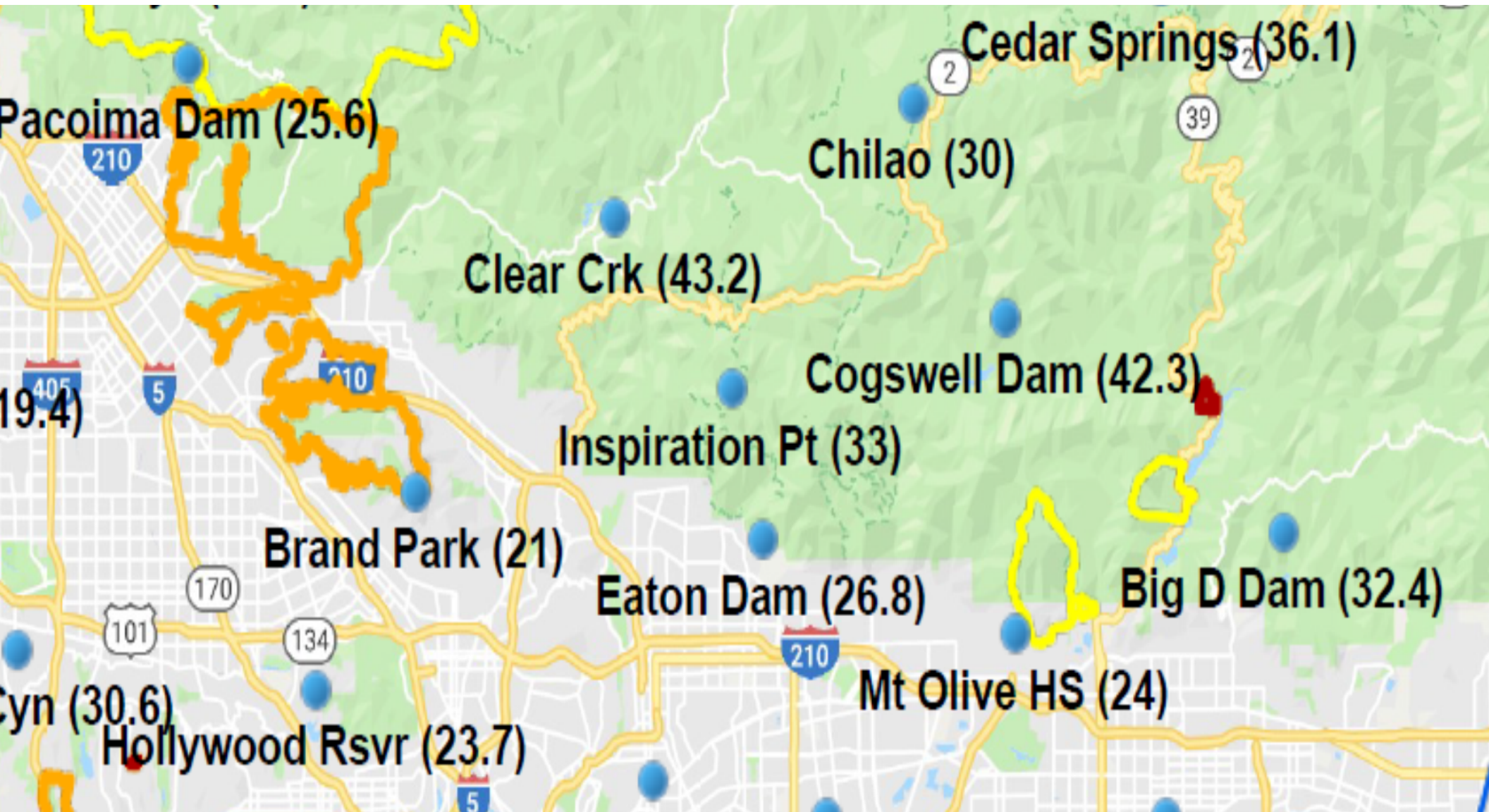


Northern Sierra 8-Station Precipitation Index for Water Year 2019 - Updated on May 1, 2019 09:49 PM

Note: Monthly totals may not add up to seasonal total because of rounding
Water Year Monthly totals are calculated based on Daily precipitation data from 12am to 12am PST



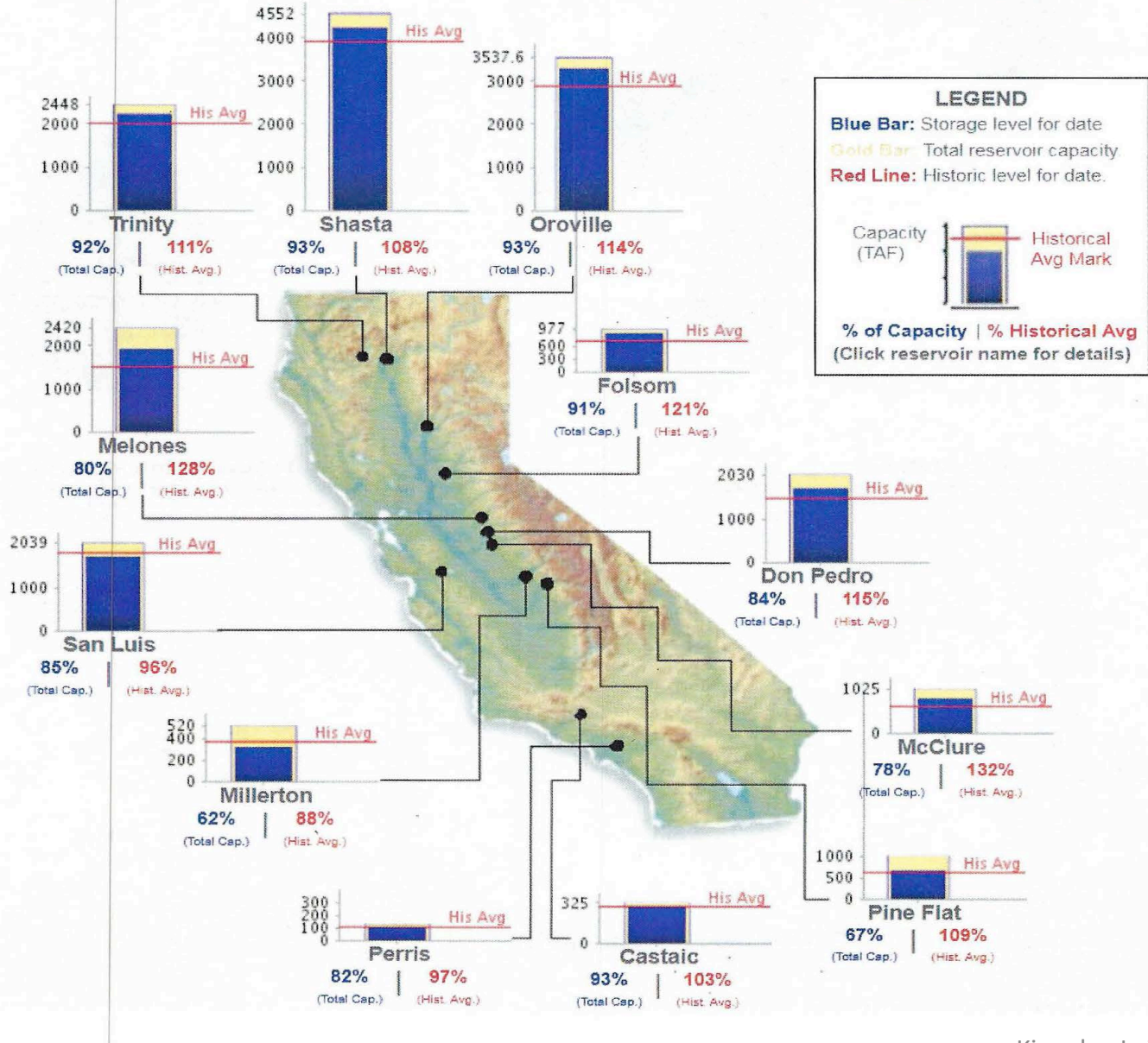
SGV —
Puddingstone
Dam
22.28 inches
Accumulated
Rainfall as of
5/1/19



CA Major Reservoir Conditions

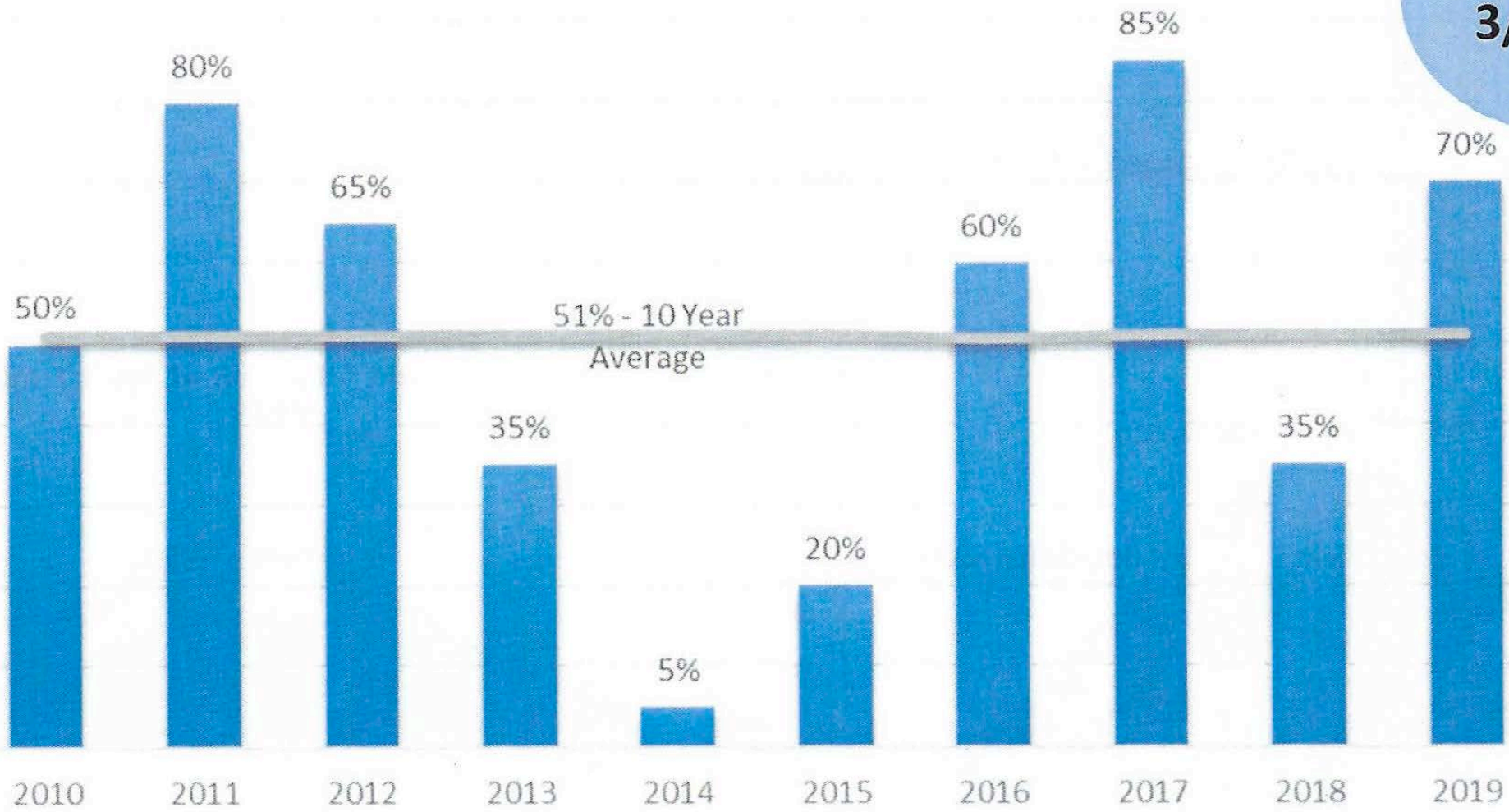
Data as of Midnight: 01-May-2019

Change Date:



STATE WATER PROJECT - ANNUAL ALLOCATION

**70% as of
3/20/19**



Regulatory and other Water Agencies

- State Water Resources Control Board (SWRCB)
- Los Angeles Regional Water Resources Control Board (LARWRCB)
- Department of Water Resources (DWR)
- Raymond Basin Management Board (RBMB)
- Foothill Municipal Water District (FMWD)
- Metropolitan Water District of Southern California (MWD)
- United States Environmental Protection Agency (EPA)
- County of Los Angeles Public Health Department
- County of Los Angeles Department of Public Works

Current Water Conservation Restrictions

- SWRCB sets state-wide restrictions for each agency and general conservation practices for water users
- County of Los Angeles has landscape irrigation ordinance and other ordinances applicable to new construction and remodeling as part of its building permit process to achieve water use efficiency
- Each agency sets individual watering restrictions regarding landscape irrigation in order to meet state requirements
- Each agency adopts a water rate plan to encourage conservation while maintaining a revenue stream adequate to maintain and operate its water system

Contact Information

Melvin L. Matthews

General Manager

Kinneloa Irrigation District

1999 Kinclair Drive

Pasadena, CA 91107-1017

Phone: 626-797-6295

Direct Line/Voicemail: 626-798-2379

Fax: 626-794-5552

Mobile: 626-622-9137

E-mail: mel@kinneloairrigationdistrict.info

Personal E-mail: melmatthews@outlook.com

General Office E-mail: kinneloa@outlook.com

Internet: <http://www.kinneloairrigationdistrict.info>