

Altadena Coalition of Neighborhood Associations (ACONA)

Let's keep Altadena
*"The best neighborhood in LA
County"!*

January 28 2020



Agenda for Tonight's Meeting

7:00 PM – 8:30 PM

- **7:00 PM – 7:05 PM Quick introductions and welcome**
- **7:02 PM – 7:17 PM Edison Tree Trimming**
 - David Ford, Government Relations Manager, SCE
 - Gerardo Avila, Vegetation Activities, SCE
- **7:17 PM – 7:32 PM Tree Trimming and Climate Change Impacts**
 - Rebecca Latta, Arborist
- **7:32 PM – 7:47 PM Aging and Senior Assistance**
 - Dana Barcelona-Bonner, Family Resource & Community
- **7:47 PM – 8:02 PM School Closures**
 - Kim Kenne, PUSD Board Member
- **8:02 PM – 8:30 PM Q&A**
- **8:30 PM Meeting end**



Your ACONA Team

- Elliot Gold
- Nina Ehlig
- Melody Comfort
- Ellen Walton
- Holly Rundberg
- Carlotta Martin
- Sussy Nemer
- Diane Marcussen
- Captain Marjory Jacobs



7:02 PM – 7:17 PM Edison Tree Trimming

- David Ford, Government Relations Manager, SCE
- Gerardo Avila, Vegetation Activities, SCE



Southern California Edison

Vegetation Management Overview

January, 2020



Energy for What's Ahead®



Vegetation Management Program

Mission:

Further prevent risks to public safety and system reliability by managing vegetation in proximity to our electric facilities

Objectives:

Maintain a safe and reliable electric transmission and distribution system by using a defense-in-depth strategy to manage vegetation and minimize encroachments from vegetation, thus effectively managing the risk to public safety, vegetation-related wildfires, and vegetation-related outages that could lead to cascading

Vegetation Management Team

Team:

- 20+ in-house certified arborists
- Certified arborist tree inspection contractors
- Notification consultants
- 800+ pruning contractors
- Quality control oversight

Proudly serving SCE's territory:

- ~900,000 trees inspected annually
- ~700,000 trees pruned per year; 400,000 trees in high fire risk areas
- ~ 39,000 dead, dying, diseased tree removals as prescribed



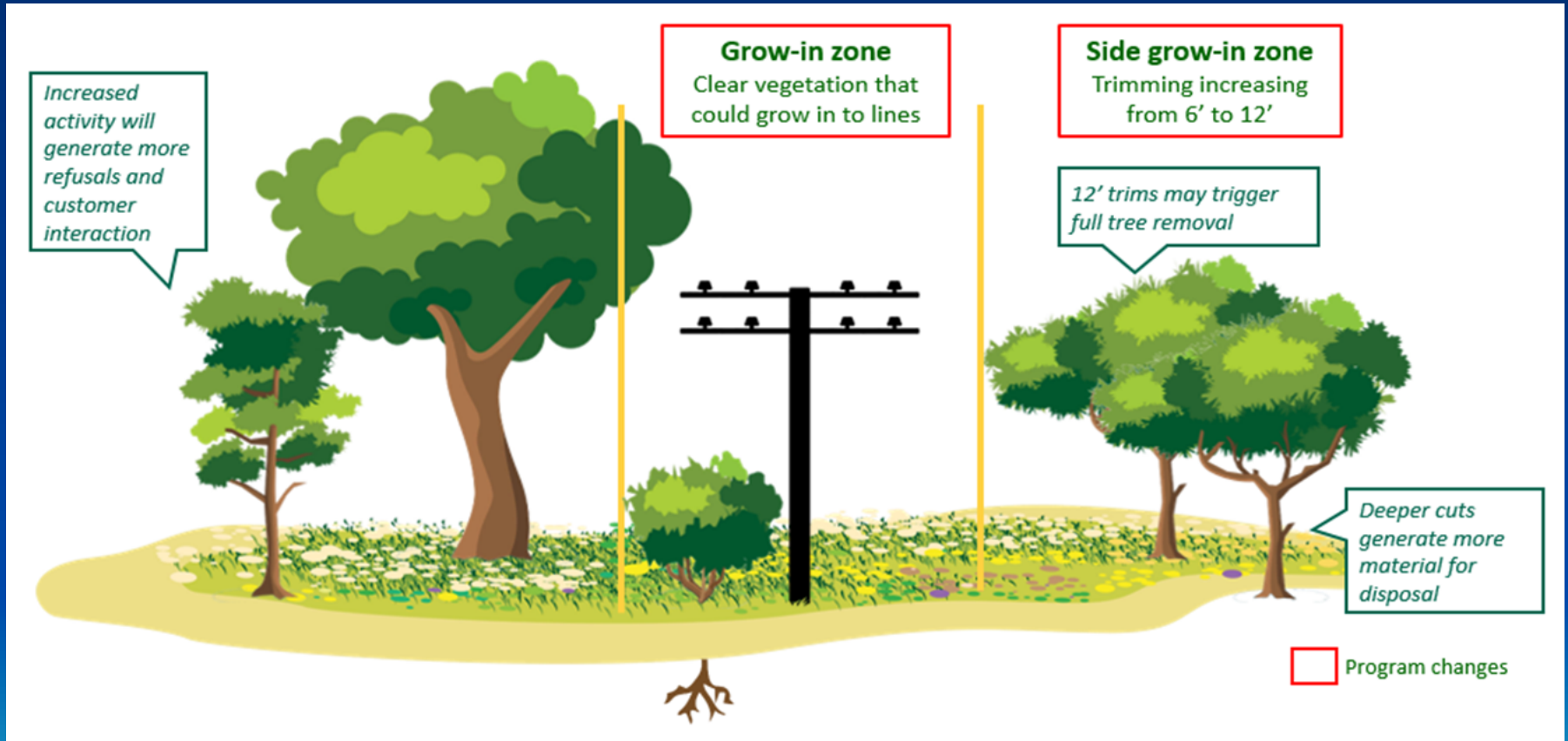
Program Overview

Program	Description	Criteria ¹
Distribution Vegetation Management Plan (DVMP) 69kV and below	Clear and maintain vegetation from Distribution lines per the new standards to prevent encroaching into the required clearance zones	Clearance at time of pruning: •12'
Transmission Vegetation Management Plan (TVMP) 69kV and above	Removals are likely where clearances cannot be met/obtained	Clearance at time of pruning: •12' (69kV) •30' (115kV to 500kV)
Hazard Tree Management Program (HTMP)	Perform tree risk evaluation to identify hazard tree characteristics that can pose a risk to our electrical facilities	High Risk ² and within the Utility Strike Zone
Integrated Vegetation Management Plan (IVMP)	Strategies to promote desirable, stable, low-growing plants	SCE Rights-of-Way

¹ Distances are consistent with CPUC recommended minimum clearances in General Order 95, Appendix E, Case 14

² Risk assessments are ranked by a tool that considers tree and site attributes to indicate possible hazardous conditions posed to equipment

Pruning Standards



New Tree Pruning Standards

In 2017, GO 05, Rule 35 Appendix E adopted new recommended minimal clearances at time of trim. These clearance requirements in high fire areas are 12'. Additional clearances may be required due to the factors below:

- Line dynamics
- Tree dynamics
- Tree characteristics
- Location



Tree Removal

- Trees that represent a risk to SCE facilities and public safety
 - Fast growing trees that cannot maintain compliance for 12 months
 - Dead, dying or diseased trees
 - Trees that cannot be pruned in accordance with ANSI A300 Tree Pruning Standards
- The removal is necessary to comply with the law and to ensure public safety
- Edison will remove/discard old trees and replace with new trees at no cost to the customers

What should customers expect

- During pre-inspection, an SCE approved vendor will meet with the customer to explain the trees to be removed and obtain customers permission/signature prior to performing the work

Tree Topping

SCE follows best utility practices when pruning trees for public safety. In cases where a tree is growing directly under a power line and when there is no pruning alternative, SCE will cut through the trunk on the top of the tree – called topping -- to create a safety zone between the tree and the power lines. Property owners can opt to have SCE remove the tree instead.

Right Tree Right Place

The California Public Utilities Commission requires minimum clearances between vegetation and power lines at all times

Tree growth, storms and electrical demand can influence the distance between vegetation and power lines

Inadequate clearances can cause unplanned outage and create the potential of fire in the neighborhood

Customer Interface



Description	Perform tree assessment and write prescription	Make customer contact to discuss and coordinate work	Tree crew performs work	Inspect work performed
Resources	Approved Vendor SCE Approves Work	SCE Approved Vendor	SCE Approved Vendor	SCE reviews work performed
Schedule	~30 Days before scheduled work		24-48 Hours	Day after tree pruned/removed

Customer Interface	<u>1st Notification</u>	<u>1st Notification</u>	<u>2nd Notification</u>	<u>No Notification</u>
	Light Pruning Pre-Inspection Contractor will leave door hanger describing proposed pruning work and indicate tree crew arrival (+30 days)	Heavy Pruning For heavy tree work, the property owner will be contacted in person to discuss the tree pruning plan	All Pruning Tree Contractor will leave door hanger and indicate work will be performed within 24-48 hours	Quality Control No customer interruptions or contact

Regulations and Requirements

Transmission & Distribution Codes and Regulations (All voltages)

- CPUC: General Order 95, Rule 35
- Cal Fire: Public Resource Code 4293*
- Cal Fire: Public Resource Code 4292*
- Cal Fire: Public Resource Code 4295.5*

Transmission Only Regulation (200kV and above)

- NERC: FAC-003-4

*Applies to High Fire Threat Districts

Thank You

- Gerry Avila SCE (gerardo.avila@sce.com)



7:17 PM – 7:32 PM Tree Trimming and Climate Change Impacts

–Rebecca Latta, Arborist





The Consequences of Aggressive Utility Line Pruning and Recommendations

Rebecca Latta, Consulting Arborist
January 28, 2020









Aggressive Vegetation Management
Change in General Order 95 Rule 35 Table 1
Appendix E

Case 13 – Clearances for all lines
Case 14 (High Fire Threat District as Identified by
Calfire) – more trees shifted into high fire
categories.

CHANGE IN UTILITY PRUNING GUIDELINES



MORE RULES

California PRC 4249 and 4293 have provisions to prune trees and vegetation so they do not grow or fall onto high voltage power lines





Appendix E – Guidelines to Rule 35

Appendix E Guidelines to Rule 35

The following are guidelines to Rule 35.

Voltage of Lines	Case 13 of Table 1	Case 14 of Table 1
Radial clearances for any conductor of a line operating at 2,400 or more volts, but less than 72,000 volts	4 feet	12 feet
Radial clearances for any conductor of a line operating at 72,000 or more volts, but less than 110,000 volts	6 feet	20 feet
Radial clearances for any conductor of a line operating at 110,000 or more volts, but less than 300,000 volts	10 feet	30 feet
Radial clearances for any conductor of a line operating at 300,000 or more volts	15 feet	30 feet

12

Note: Added November 6, 1992 by Resolution SU-15. Revised September 20, 1996 by Decision No. 96-09-097, August 20, 2009 by Decision No. 09-08-029, January 12, 2012 by Decision No. 12-01-032, and December 14, 2017, by Decision D. 17-12-024.



PRUNING PRACTICES

Crown Reduction
Side Cutting
V cutting



UTILITY INSTRUCTIONS TO CONTRACTORS

Heavy Prune
Top
Side Cut



LINE CLEARANCES

Clearances observed in the field:

Insulated lines

- no abrading branches – 6 inches originally
- contractor now asking for 6 -12 and anything over the line. Trees pruned out of season

Non-insulated lines

- 12 feet in HFRA regardless of species. Trees pruned out of season

Non-insulated lines - 4 - 6 feet in non HFRA.



MORE AGGRESSIVE APPROACH

- New guidelines may allow them to take trees within 200 feet of lines that are not dead, dying or diseased. Utilities appear to be phasing these removals.
- No 2nd opinion requirement for trees outside ROW
- Trees shifted into category with more recommended clearance – see Fire Threat map
www.cpuc.ca.gov/FireThreatMaps



FIRES AND POWER LINES

- Lines can break in the wind and ignite fuels on the ground
- Lines can slap together
- Equipment gets old or fails
- Trees contact lines
- Deliberate debris burning, fireworks and rogue campfires are still among the most common causes of wildfires in California.



PRUNING STANDARDS

- ANSI A300 National Pruning Standards
- ISA Best Management Practices for Tree Pruning (2018)
- Tree Care for Wildlife Best Management Practices (July 2018)



STANDARDS?

- What is the science behind the 12-foot rule.
- Why are we clearing 12 feet on insulated lines?
- Who benefits from this pruning effort? Could the problem be solved differently?
- Topping, Stubs, rip cuts and spikes....





TOPPING

- Not considered an acceptable arboricultural practice
- Takes stored starch (energy) from the tree to restore foliage. Can weaken tree.
- Promotes poorly attached sprouts that may later fail.
- Promotes decay in the topping cuts





WHAT HAPPENS TO A TOPPED TREE?

- Decay moves down the trunk and into the main stem.
- Topping can lead to sunburn damage on bark.
- Topped trees will put out aggressive shoots from the cut to try and restore canopy.
- Topped trees have potential to become hazardous and may require more maintenance



LINE CLEARANCE WITHOUT TOPPING?

- Comprehensive solutions involve looking at all the options.
 - Improved attention to pruning quality
 - Infrastructure hardening
 - Undergrounding (\$\$\$)
 - Identifying and replacing trees if necessary



INFORMATION

- Why Topping Hurts Trees –
<https://www.treesaregood.org/portals/0/docs/treecare/WhyToppingHurts.pdf>
- Trees: Properly prune to ensure against decay and breakage (Deseret News, Larry A. Sagers Garden Columnist, November 19, 2000)
<https://www.deseret.com/2000/11/19/19539372/trees-prune-properly-to-ensure-against-breakage-and-decay>



EMERGENCY?

- Governor Newsom issued an emergency order to expedite fire management efforts rolling back environmental protections.
- It's been over a year.
- How hard is it to employ biologists to run ahead of crews and monitor for birds and wildlife? Edison did it for TRTP. There is a group already trained...



THE CONUNDRUM

- Aggressive pruning for line clearance is driven by fear of fire
- Pruning trees is the 'low hanging fruit' .
- Hardening infrastructure and homes/yards may be more effective.



FIRE FACTS

- Clearance may not stop damage from wind driven fires.
- Most of the recent destructive fires have been spread by embers driven by the wind.
- Fires make their own weather.
- Excessive clearance/vegetation removal can create a “Bowling Alley for Embers”.



FIRE DISASTERS REQUIRE SOCIAL SOLUTIONS

- A century of fuel breaks and aggressive vegetation management has not made us safer.
- Reduce new construction in 'fire corridors'
- Retrofit buildings and property to be more fire resistant.
- Thinned vegetation not bare ground.



QUESTIONS FOR LAWMAKERS

- What impact does tree and canopy loss have on climate change? Why are we spending GHG money on vegetation removal?
- Are there alternatives to aggressive tree pruning?
- What is the cost?



TOPPED TREES MAY DIE

- Edison promises to replace trees.
- Where is the plan for replacement
- Mitigation fund in LA County restoring funding to LA County Forestry and Fire nurseries in San Dimas and Malibu might be a good option.
-
- Cities and Counties should control mitigation on public property, not Edison.



URBAN TREE CANOPY LOSS

- Public Trees - Altadena, La Canada Examples
- Private Trees – Who pays to remove and replace if they die?
- Open Space Trees – Oversight???



WHY NOT MITIGATE???

- Who pays if the topped tree dies?
- Who is liable if the topped or damaged tree splits out or fails on property or persons?
- What if Edison gave LA County money to their forestry program to grow trees in existing nurseries in Malibu and San Dimas for replanting efforts?



MITIGATION

- What role do these trees and vegetation being removed have in mitigating peak temperatures in the summer?
- What efforts have the investor owned utilities made to replace the resource they are removing?



Trees have Value - Benefits lost

- In the Inland Empire, 100 large street trees remove per year:
 - 14 tons of CO₂
 - 351 pounds of other air pollutants
 - Catch 223,800 gallons of rainwater



Avoided Cost Savings

- Stormwater management - filtration/interception - reduced flooding
- Lowered peak energy consumption
- Lowered overall energy consumption
- Moderating climate



TREES AND CLIMATE CHANGE

- Trees are giant carbon storage units
- All wood material should be returned to mulch, processed for lumber or furniture.
- Burning wood releases carbon immediately, increases particulate pollution. What is Edison doing with the wood?



TREE FORM

- Upright species that get very tall under power lines may need to be replaced in some circumstances.
- Phased removals may be needed, but a replacement plan maximizing carbon
- sequestration benefits provided by trees should be prioritized.
- Slow growing, round headed trees like oaks should not be topped.



RATE OF GROWTH

- Slow vs. Fast Growing Species – Slower growing species may need less clearance and in some cases large branches can be retained (see wildfire plan details).
- Palms – very dangerous because fronds ignite and fly in wind driven fires. Removals important to protect homes.





2018 COORDINATION AND NOTIFICATION

- Notification has been poor, misleading or non-existent in parts of Altadena.
- Coordination with County Public Works was poor. County assets were topped without notification.
- Each jurisdiction forced to make their own agreement with Edison separately. No consistent policies between cities.



2019 – COMMUNICATION AND NOTIFICATION

- Clients in La Canada had their locks cut for utility pruning.
- LA County Public Works shut down utility pruning operations on Santa Anita Avenue.
- Phone numbers listed on hang tags with full voicemails. No calls back.
- Rumors of removal and replacement deals.



COMMUNICATION

- Edison's hang tag and website says that customers that require 'heavy pruning' will be contacted in person to discuss a pruning plan.
- Some clients who have asked for a meeting have not been able to get a meeting with the Edison arborist contractor.



WHAT IF YOU WANT YOUR OWN PERSON TO PRUNE?

- Pruners must be certified for utility line clearance.
- Hard to find certified pruners.



MY WISH LIST

- Edison should revise and expand the list of trees to plant under power lines taking climate change into account.
- Mitigation fund LA County Forestry to reinvigorate nursery program. Coordinate with CCC/LACCC and NGO's to plant AND maintain trees.



BIG PICTURE

- Senate Bill 901 – Should it have exemptions for CEQA?
- We can model heat islands, canopy cover and other factors determine where trees should be planted.
- This is not easy – comprehensive coordinated approach required.





Rebecca Latta Consulting

rebeccalattaconsulting.com

ISA Certified Arborist WE #4264

ISA Certified Tree Risk Assessor

American Society of Consulting Arborists

SGV Chapter, California Native Plant Society

7:32 PM – 7:47 PM Aging and Senior Assistance

- Dana Barcelona-Bonner, Family Resource & Community



It's all about CHOICES! THINGS YOU NEED TO KNOW AS A SENIOR 55+ WHEN FACED WITH A CHALLENGE.



- My home has become too much for me and my spouse to manage, or by myself.
- I've fallen ill and my family lives far away, or I have no immediate family in the area.
- I'm lonely and bored by myself at home.
- My memory is failing, and I'm afraid I'll make dangerous mistakes in taking care of my home.
- I can no longer drive. What can I do to get myself around?
- I've been in my house for more than 50 years, it's just too much to deal with to try and move.



Presented by Dana Barcelona-Bonner
Family Resource & Community Partner
Regency Park Astoria 626-796-4303
925 East Villa Street, Pasadena



How do feel you about trying out something new in life?

- I' m outgoing and friendly, I can handle most anything.
- Open to new experiences.
- Quiet and more reserved, uncomfortable in new situations.
- I' m a homebody, and I' ve never liked going out to meet new people.
- I know I' m a Senior Citizen, but I don' t FEEL OLD!
- I' m always ready for a new adventure.
- I' m much better with One on One friendships.
- I' m not one to make changes, if it isn' t broken, why fix it?
- Everybody, leave me alone!





Are you a Veteran, or the widow of a Veteran?



- Try to steer clear of 3rd Party agencies that claim they'll get your Veteran's benefits for you quicker. They usually want to manage your month/funds, and they will definitely charge in some way, shape or form. Be careful of agencies claiming to provide you in home care, that your VA BENEFITS will automatically cover. There's a scam out there right now—be careful. (we can arrange for a speaker on Elder Fraud Abuse and Scams at a later time if you'd like)
- Call my contact at the VETERAN'S ADMINISTRATION, she is a Veteran's counselor, and works for the agency DIRECTLY.
- She is not a 3rd party—her name is Dorene Hartley, her phone number is 626-865-4906. you need to call to make an appointment. Her office is located in the City of Industry. 17171 East Gale, Industry, CA 91745

I can no longer drive, what are some of my options?

1. Have you signed up for Access? Do you need more information on how

To sign up for Access? **(SEE HANDOUTS)**

2. Do you own a smartphone and know to use LYFT or UBER? **(I CAN SHOW YOU HOW TO DOWNLOAD ON YOUR SMARTPHONE)**

3. You don't own a smartphone, just a regular landline. Are you familiar with Go Go Grandparent? They work the same as UBER or LYFT, but you can use your landline to set your appointments to and from. Call 1 (855) 464 - 6872 or 1 (855) GOGO-USA—**(SEE HANDOUTS)**

4. Are you utilizing your local Dial A Ride? **(SEE HANDOUTS)**



What are some of my options if I need additional help

- **In-Home Care** with a caregiver from an agency (fingerprinted and background checks done)
--average cost runs **\$25-\$28 per hour**
- **Adult Day Care Centers**-usually a daily/monthly rate depending on how many hours you may spend there
--average cost **\$1500 per month and up**
- **Assisted Living**- Monthly rent includes 3 meals daily, utilities, transportation, excursions, housekeeping, and in house caregiving staff available 24 hours per day.
--average rents run from **\$2500-\$8000**
- **Board and Care Homes**-Monthly rent includes meals, light activities, care services. Average monthly rent in Pasadena:
--average cost **\$4000-\$7000 per month**
Usually Board & Care homes house no more than 6 people at a time. Mental and physical challenges among residents tend to be a higher level of need.





Lunch & Learn



REGENCY PARK
SENIOR LIVING



Regency Park Astoria

Wednesday, February 5th 2020

12:00 – 1:30 pm

ASSISTED LIVING | MEMORY CARE

Presented by: Dana Barcelona-Bonner
925 East Villa Street, Pasadena, 91106
Please RSVP: 626-796-4303 seating is limited

FOR BOUTIQUE INDEPENDENT LIVING
ASK US ABOUT 'THE VILLAS' BY REGENCY PARK

Regencypk.com

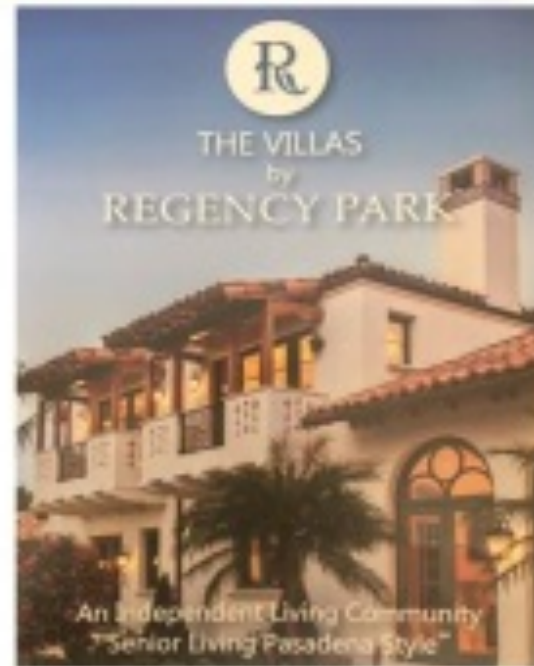
facebook.com/Regencyparkseniorliving



Lunch & Learn



REGENCY PARK
SENIOR LIVING



The Villas
By Regency Park
Wednesday, March 25, 2020
12:00 – 1:30 pm

539 N. Mentor Street, Pasadena, 91106
Please RSVP: 626-796-4303 seating is limited

BOUTIQUE INDEPENDENT LIVING

Thank you for the opportunity to speak before
your group tonight.

Please feel free to reach out to me with any
questions, or resources I may be able
to provide you.

Dana Barcelona-Bonner
Family Resource & Community Partner
626-796-4303
dbonner@rpsli.com



7:47 PM – 8:02 PM School Closures

- Kim Kenne, PUSD Board Member



Pasadena Unified School District School Consolidations 2019

Presenter: Kim Kenne, School Board Trustee
Email: kenne.kimberly@pusd.us



Why close schools?

Declining enrollment for the past 17 years

- Total of 7,000 students since 02-03
- Enrollment declining due to lower birth rates and housing that is less affordable to families with children

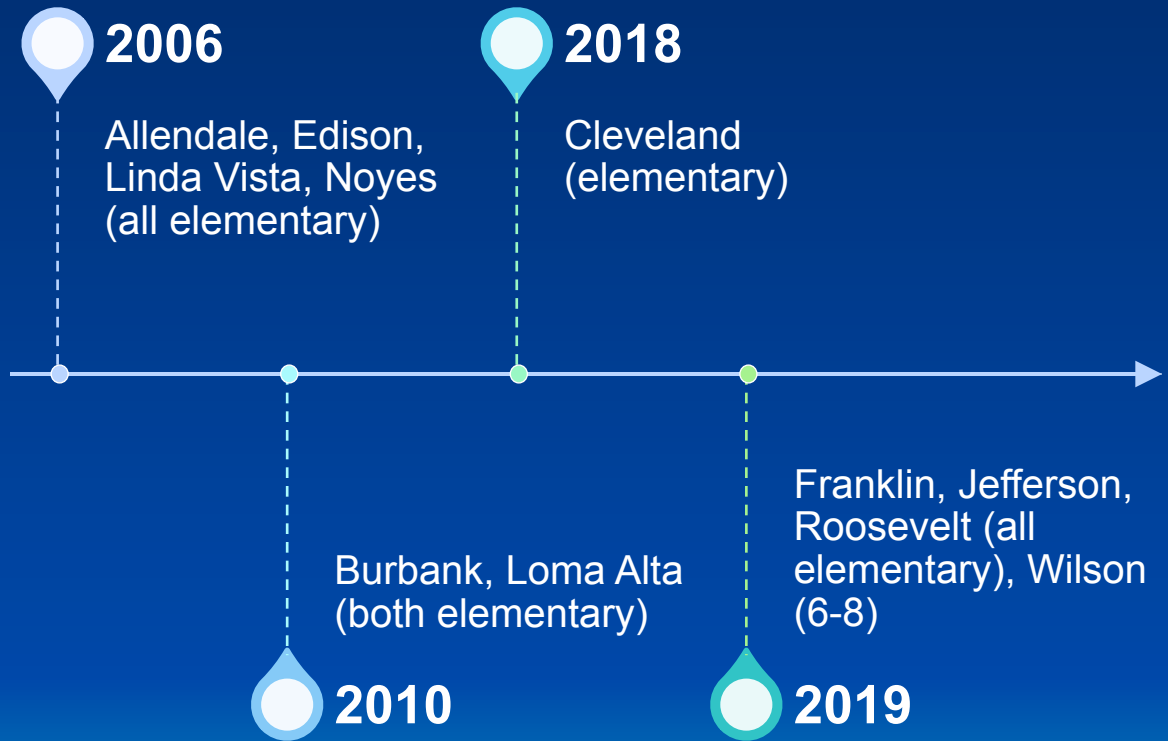
Allows funds to be invested in programs and resources

- Prevent spreading resources too thin over too many schools. Recent increased costs of education make efficiency more important.

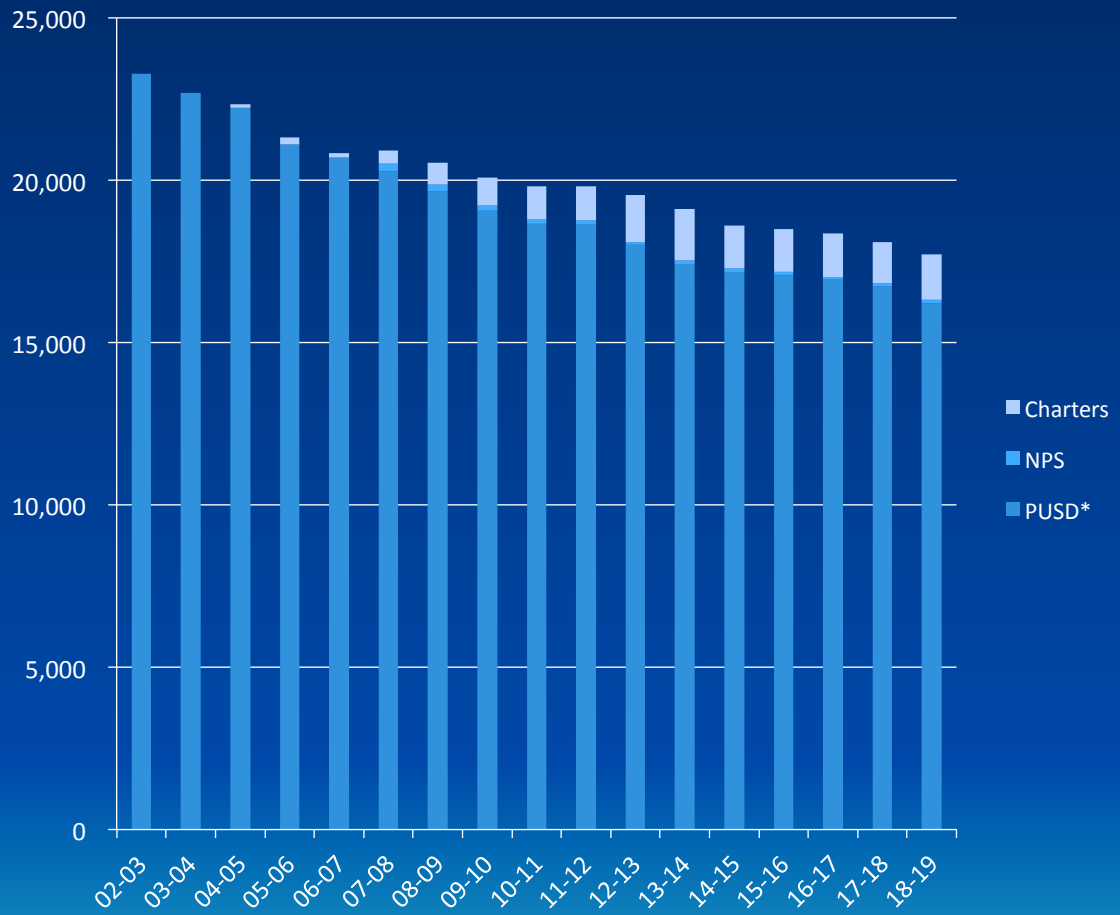
Not because schools were “failing” or simply to save money.



Recent School Closures



Enrollment over time



Declining Enrollment

Total loss of students from 2002 to 2019: almost 7,000

Approximate loss of students for 19-20: 400

Most of the loss in 19-20 was in elementary grades

Projected continuing decline through 23-24 school year is 1,200 additional students.

PUSD students who reside in Altadena make up approximately 17% of total PUSD students (18-19). Of these, about 1,250 are elementary students which equates to 3 schools of around 400 students.

Process for Master Planning Committee



Authorized by PUSD board in November 2018



Met from December 2018 to September 2019



Developed a goal/vision, expected outcomes and guiding beliefs – approved by board February 7, 2019



Developed primary and secondary factors to consider – approved by board June 27, 2019

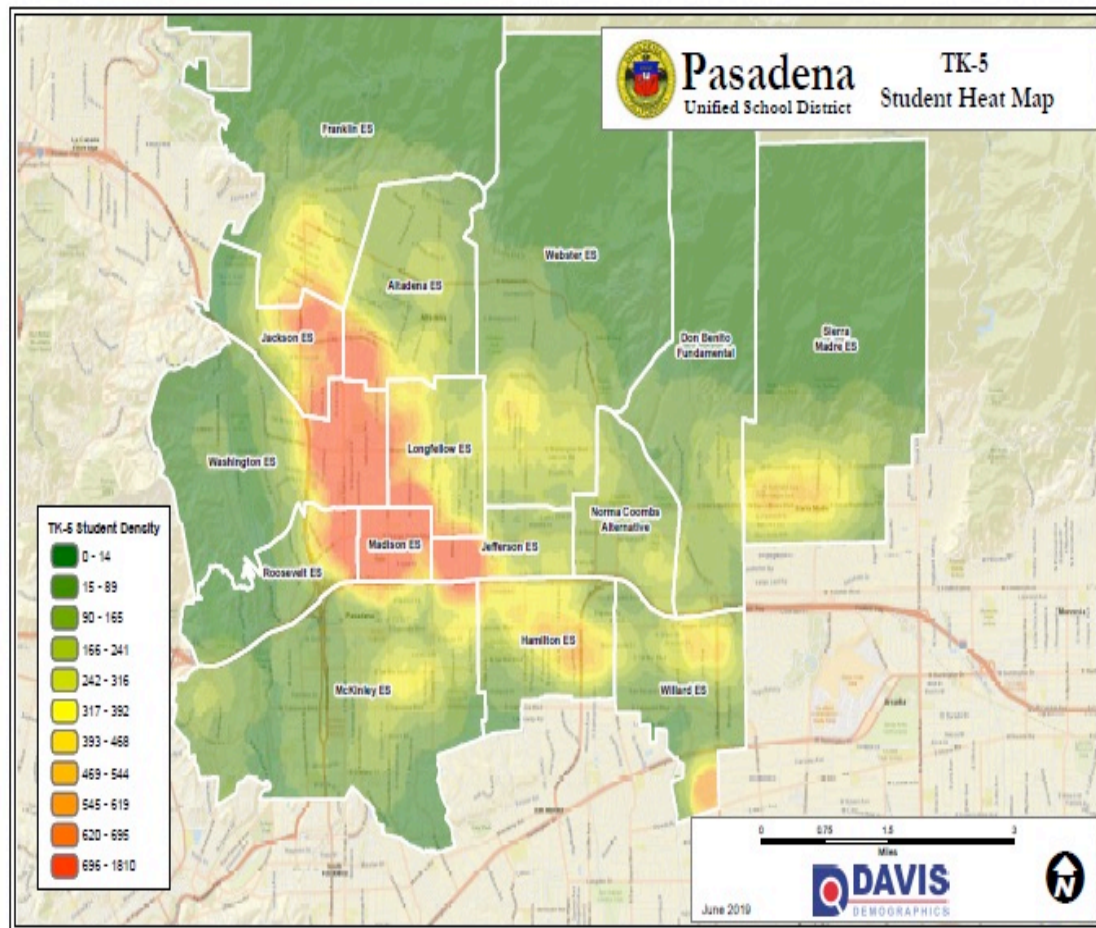


Looked at enrollment and demographic data, school programs and characteristics and school capacities



Developed possible scenarios for consolidations

Where do
PUSD
students
live?



Excess Site Capacity

Grade Span	Est. Capacity (adjusted)	19-20 Enroll (est)	Current Excess Capacity	Current Excess %	Projected 23-24 Enroll	Projected Excess Capacity	Projected Excess %
K-5	10131	7514	2617	26%	6939	3192	32%
6-8	5873	3643	2230	38%	3309	2564	44%
9-12	5985	4205	1780	30%	4050	1935	32%

Decisions and Implementation

September/October – Board decides on school consolidations

October/November – New boundaries decided by board and planning begins.

December/January – Families from closed schools participate in special enrollment lottery prior to regular enrollment lottery. Families who don't receive placements will remain on wait lists for preferred sites and have priority over other families. Alternatively, families could enroll at the designated receiving school.

Future Steps

Review boundaries for schools and potentially make changes (Spring 2020) for the 21-22 school year.

Confirm savings from consolidations to inform budget and program planning process for 20-21.

Revisit secondary (especially high school) options at some point – four or five years out has been mentioned.

Further Information

For information on the Master Planning process and all reports, data and agendas:

<https://www.pusd.us/Page/317>

For enrollment and registration information:

<https://www.pusd.us/enrollment>

For Open Enrollment (Lottery) information:

<https://www.pusd.us/Page/7799>

QUESTIONS?



**Please be sure you
signed in**

(if we already have your email
address, we just need your name)



Schedule for remaining ACONA Meetings 2020

March 24 th	(Tuesday)
May 26 th	(Tuesday)
September 22 nd	(Tuesday)
November 18 th	(Wednesday)



Thank you!
Questions?