

# Altadena Coalition of Neighborhood Associations (ACONA)


Let's keep Altadena  
*"The best neighborhood in LA  
County"!*

September 27, 2016



# Agenda for Tonight's Meeting

## 7:00 PM – 8:30 PM

- **7:00 PM – 7:05 PM Quick introductions and welcome**
  - **7:05 PM – 7:20 PM Altadena Sheriff's Update on Shootings & Intro to new Officers**
    - Captain Vicki Stuckey, Altadena Sheriff's Station Commander
  - **7:20 PM – 7:40 PM Traffic and Lighting and Road Maintenance & Speed Bumps**
    - Edward Lee, Associate Civil Engineer LA County
    - Carl Pederson III, LA County Dept. of Traffic and Lighting
    - John Ickis, LA County Dept. of Traffic & Lighting
  - **7:40 PM – 8:00 PM Update- The Hahamonga/Eaton Wash Altadena to Pasadena water pipeline**
    - Ken Zimmer, Senior Civil Engineer Water Conservation Planning, Water Resources Division LA County
  - **8:00PM – 8:30 PM Open discussion Q&A**
  - **8:30 PM Meeting end**
- 

# Your ACONA Team

- Elliot Gold
- Nina Ehlig
- Melody Comfort
- Sussy Nemer
- Captain Vicki Stuckey
- Sgt. Harvey “Sandy” Crosthwaite
- Captain Steve Strull
- Holly Rundberg
- Carlotta Martin
- Dale Comfort
- Ellen Walton



# **Altadena Sheriff's Update on Shootings & Intro to new Officers**

**7:05 PM – 7:20 PM**

- **Captain Vicki Stuckey, Altadena Sheriff's Station Commander**



# Introductions

- Operations Lieutenant Yolanda Clay
- Detective Bureau Lieutenant Carmichael  
“Mike” Octave
- Community Relations Sergeant Harvey  
“Sandy” Crosthwaite



# Shootings in Altadena July-September 2016



- **Tuesday, July 5, 2016** Homicide at approximately 10 PM in the 300 Block of Figueroa Drive. The victim was 4-year-old Salvador Esparza. The Los Angeles County Sheriff's Department Homicide Bureau is seeking the public's help with any information. Homicide Bureau's phone number is 323-890-5500. Those wish to remain anonymous are encouraged to call Crime Stoppers at 800-222-8477.



- **Monday, July 25, 2016**, at approximately 11 PM an adult male and female were in a vehicle in the 600 block of East Pine Street. The male victim sustained a wound to his left palm and right wrist. The victim was transported to a local hospital for treatment. (4602)





- **Tuesday, July 26, 2016, 1 AM** a shooting occurred on Lake Avenue and Woodbury Road. A male victim was in a vehicle when he was fired upon and sustained wounds to his left hand and left knee. The male victim was transported to a local hospital for treatment. (4611)



- **Tuesday, July 26, 2016, 2:30 AM** a shooting at inhabited dwelling occurred in the 200 block of West Calaveras Street. There were seven (7) persons inside and thankfully no one was injured. (4603.2)



- **Saturday, July 30, 2016, 9 PM** an adult male was walking in the 2200 block of North Lincoln Avenue when he was fired upon. The victim sustained a wound to his left leg. (4610)



- **Friday, August 12, 2016, 11:30 PM** a shooting at an inhabited dwelling occurred in the 2600 block of Glen Avenue. No one was injured, there was damage to a vehicle that was parked. (4603.2)



- **Thursday, August 18, 2016, 9 PM,**  
Victims were walking toward their vehicle in the 400 block of Mariposa when the suspect fired several gunshots from their vehicle and fled the area. No one was injured. (4603.2)



- **Friday, September 3, 2016, 9:00PM,** 2500 Block of Fair Oaks Avenue. An informant told responding deputies that male Hispanics were observed fighting near the location. The male Hispanics ran away from the location and the informant heard numerous gunshots in the general area. Deputies found an unoccupied vehicle had been struck by gun fire. (4610)



- **Tuesday, September 13, 2016, 5:59PM**, units responded to 70 Block of East Calaveras regarding a shots fired call. One vehicle (**A**) was driving east on West Calaveras and was being followed by another vehicle (**B**). A suspect from vehicle (**B**) fired several rounds at vehicle (**A**). At this time we do not have any information on either the vehicle or suspect(s) involved. One casing was recovered at the scene. No victims or impacts were located. (4611)



- **Tuesday, September 20, 2016**, Deputies responded to a call of a gunshot victim at 830 Sacramento St, ALD. Upon arrival, they found two gunshot victims. Both victims were standing in front of the location when a black late-model SUV drove by them firing several rounds at them. The suspect vehicle drove away west on Sacramento St to south on El Molino Ave and out of view. Victim 1 was shot twice (GSW to right forearm and right buttocks) and Victim 2 was shot once (GSW to right leg). Both victims' injuries were non-life threatening. LA County Fire responded to treat the victims for their injuries. Both victims were transported to the hospital for further treatment.





- **Emergency 9-1-1**
- **Altadena Sheriff Station 626-798-1131**
- **Crime Stoppers: 1-800-222.TIPS (8477), [www.LACrimeStoppers.org](http://www.LACrimeStoppers.org) or text “TIPLA plus your tip to 274637 or CRIMES.**
- **WE Tip 1-800-78CRIME (27463)**



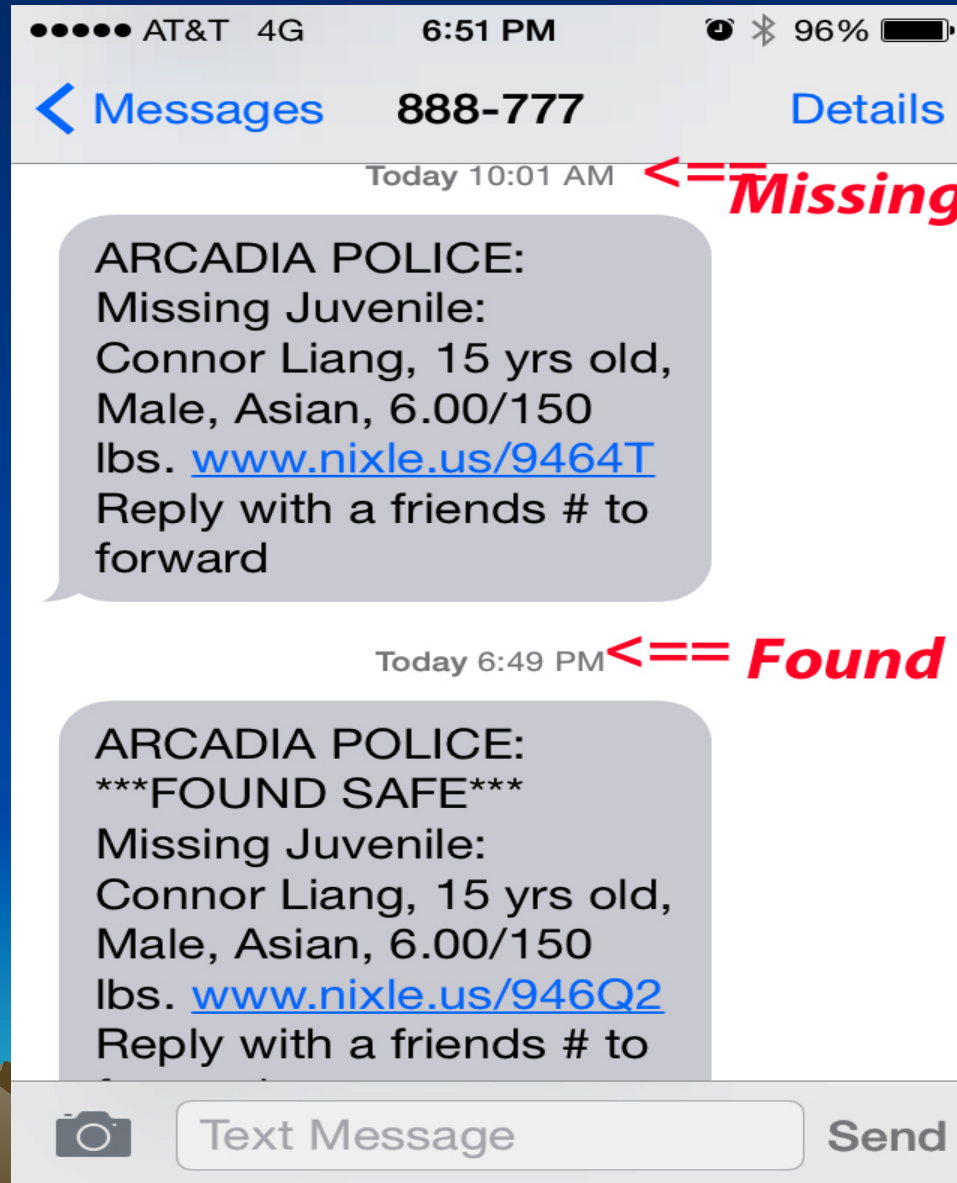
# Subscribe to & Use Nixle

- Go to <http://nixle.com/register/>
- Text your ZIP CODE, (91001) to 888777 for mobile alerts

**Here's an example of how it works**



# Arcadia PD Last week

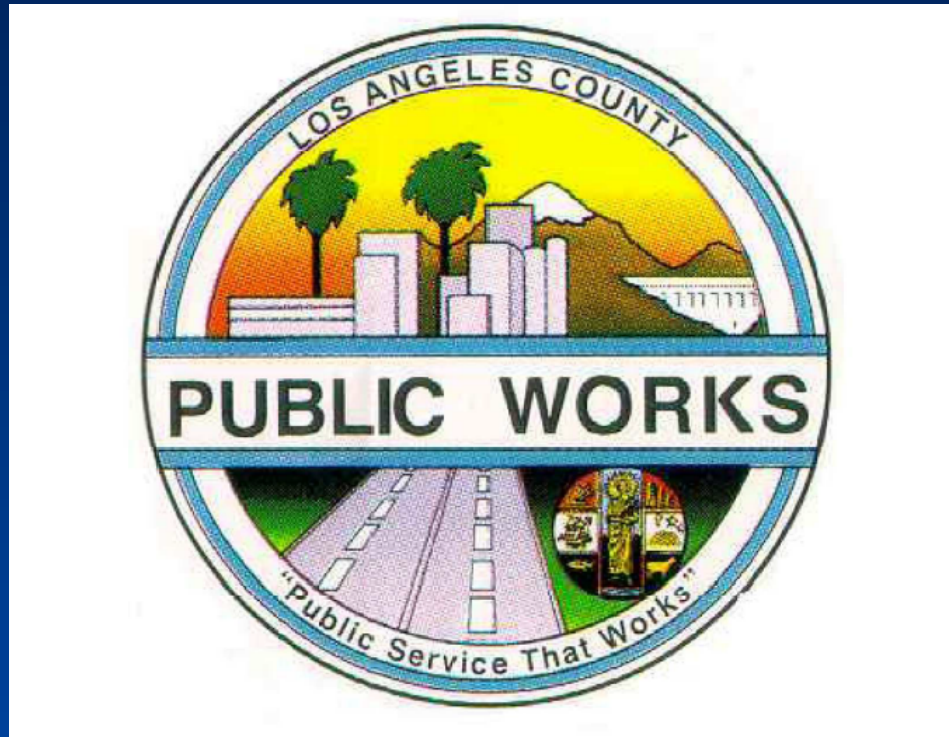


# Traffic and Lighting and Road Maintenance & Speed Bumps

7:20 PM – 7:40 PM

- Edward Lee, Associate Civil Engineer LA County
- Carl Pederson III LA County Traffic & Lighting
- John Ickis LA County Dept. of Traffic & Lighting





**Edward Lee, Associate Civil Engineer LA County**

**ROAD MAINTENANCE DIVISION**  
**MAINTENANCE DISTRICT 1**

# ROAD MAINTENANCE DIVISION

- STREET SWEEPING
- PAVEMENT AND SIDEWALK MAINTENANCE
- TREE MAINTENANCE
- DISASTER RESPONSE/CLEAN UP



MOST VISIBLE SERVICES



# STREET SWEEPING

- REQUIRED BY NATIONAL POLLUTANT DISCHARGE ELIMINATION SYSTEM (NPDES) PERMIT
- IMPROVE WATER QUALITY
- SWEEP 193 CURB MILES PER WEEK IN ALTADENA AREA
- NO PARKING DURING STREET SWEEPING SIGNS





# PAVEMENT AND SIDEWALK MAINTENANCE

- MAINTAIN 133 CENTERLINE ROAD MILES IN ALTADENA AREA
  - MONTHLY STREET INSPECTION
  - POTHOLE REPAIRS – WITHIN 48 HOURS
- ANNUAL SIDEWALK INSPECTION
  - TEMPORARY PATCH
  - PERMENANT REPAIR



# TREE MAINTENANCE

- DEAD TREE REMOVAL
- BROADLEAF TREES - EVERY 2 OR 5 YEARS
- PALM TREES – EVERY 2 YEARS
- TREE PLANTING

NUMBER OF TREES (TOTALS)	BROADLEAF	PALMS
MAINTENANCE DISTRICT 1	65,000	9,300
ALTADENA	13,000	2,700



## CONTACT INFORMATION

- ROAD DIVISION 514 OFFICE #: (818) 249-3094
- MAINTENANCE DISTRICT 1 OFFICE #: (626) 337-1277
- AFTER HOURS/24 HOUR #: (626) 458-4357(HELP)
- WEBSITE: [DPW.LACOUNTY.GOV](http://DPW.LACOUNTY.GOV)
- DOWNLOAD OUR APP “THE WORKS” ON GOOGLE PLAY OR APP STORE



# **SPEED HUMPS**

## **Altadena Coalition of Neighborhood Associations 9/27/2016**

Presented By: John Ickis, PE  
Traffic and Lighting Division  
Los Angeles County Public Works

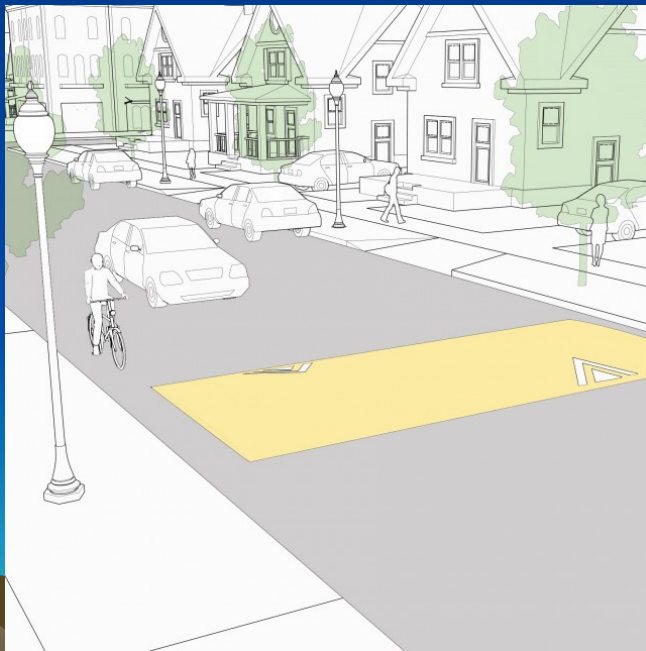
# SPEED HUMPS

*What are Speed Humps?*

***Traffic Calming Measure designed to reduce vehicular speed by the use of a vertical deflection.***

*What are Speed Cushions?*

***Similar to Speed Humps which include wheel cut-outs to allow unimpeded passage of emergency vehicles.***



*Speed Hump and Speed Cushion – National Association of City Transportation Officials*

# DPW PROCEDURE

**STEP 1. A resident submits a request to DPW to install speed humps on a specific street.**

**STEP 2. A traffic study is conducted for the segment of the street requested which includes:**

- **Obtaining traffic data for vehicular speed and volume**
- **Field review**
  1. **Take photos**
  2. **Measure width of street**
  3. **Check percent grade**
  4. **Review existing traffic control devices**
- **Evaluate all the gathered data**
- **Obtain approval from the Fire Department**
- **Obtain a petition from the affected residents**



# SPEED HUMP CRITERIA

1. The roadway must be classified as a “local” roadway.
  - “local” is defined by the County Highway Plan based on roadway width and the posted speed limit must be 30 mph or lower.
2. The prevailing speed must be greater than 35 mph.
  - “prevailing speed” is defined in the CAMUTCD as the speed at which 85 percent of traffic is traveling at or below.
3. The roadway cannot be greater than 40 feet wide.

# SPEED HUMPS CRITERIA CONTINUED

4. The roadway has between 500 and 2000 vehicles per day.
5. The roadway cannot be a public transit route.
  - No Metro Bus Stops
6. The roadway cannot have a grade steeper than 8 percent.
7. The roadway contains no curves that affect visibility.





# HOORAY WE MET THE CRITERIA

## NOW WHAT?



- Approval for the proposed speed humps will be requested from the Fire Department.
- Residents will be asked to submit a petition showing at least 75% support from all property owners adjacent to the roadway for the installation of speed humps.

# THE PROS/CONS OF INSTALLING SPEED HUMPS

## PROS:

- Speed humps can decrease cut through traffic
- Speed humps are effective in decreasing existing speeds that are over 35 mph.



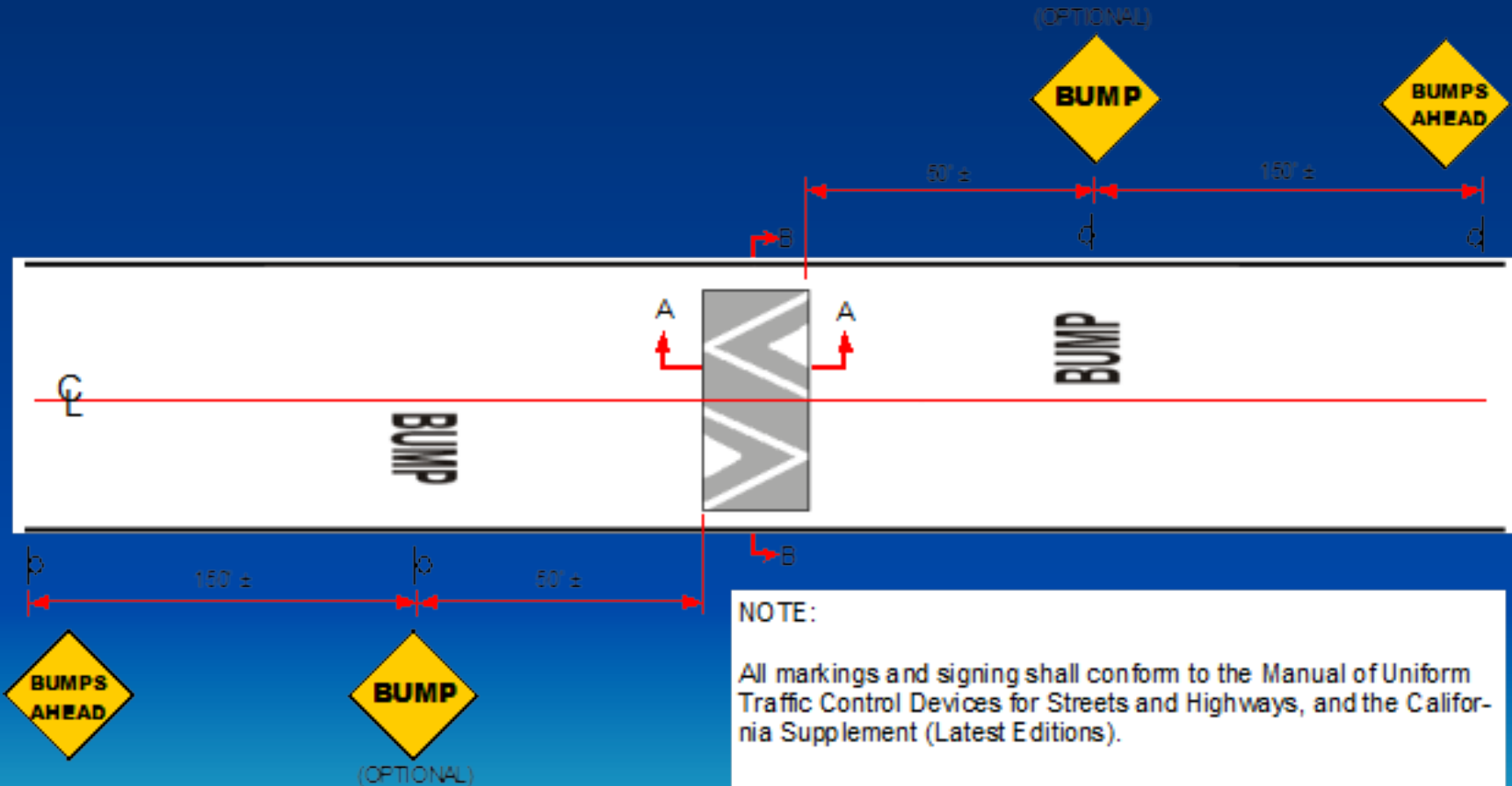
# THE PROS/CONS OF INSTALLING SPEED HUMPS

## CONS:

- Speed humps can decrease emergency response time
- Speed humps require special signs and pavement markings which may be unpleasant to some residents
- Increase in noise from vehicles slowing and speeding as they go over the speed humps/cushions have been reported. Particularly noticeable at night when the neighborhood is quiet.



# THE PROS/CONS OF INSTALLING SPEED HUMPS



# SPEED HUMP HOLLISTON AVENUE



# OTHER SPEED MITIGATION MEASURES

**TRAFFIC SIGNS** – Speed limit signs and pavement markings will remind motorists of the neighborhood speed limit, especially those unfamiliar with the area.

**ENFORCEMENT** – Increased police enforcement will usually slow down speeders (Altadena CHP).

**RADAR SPEED TRAILER** – This equipment shows the motorists how fast they are actually going to make them aware of their speed.

**NEIGHBORHOOD NEWSLETTERS** – These help the neighborhood be more aware of the hazards associated with excessive speed.



**THANK YOU!**



# **Update- The Hahamonga/Eaton Wash Altadena to Pasadena water pipeline**

**7:40 PM – 8:00 PM**

- **Ken Zimmer, Senior Civil Engineer  
Water Conservation Planning, Water  
Resources Division LA County**





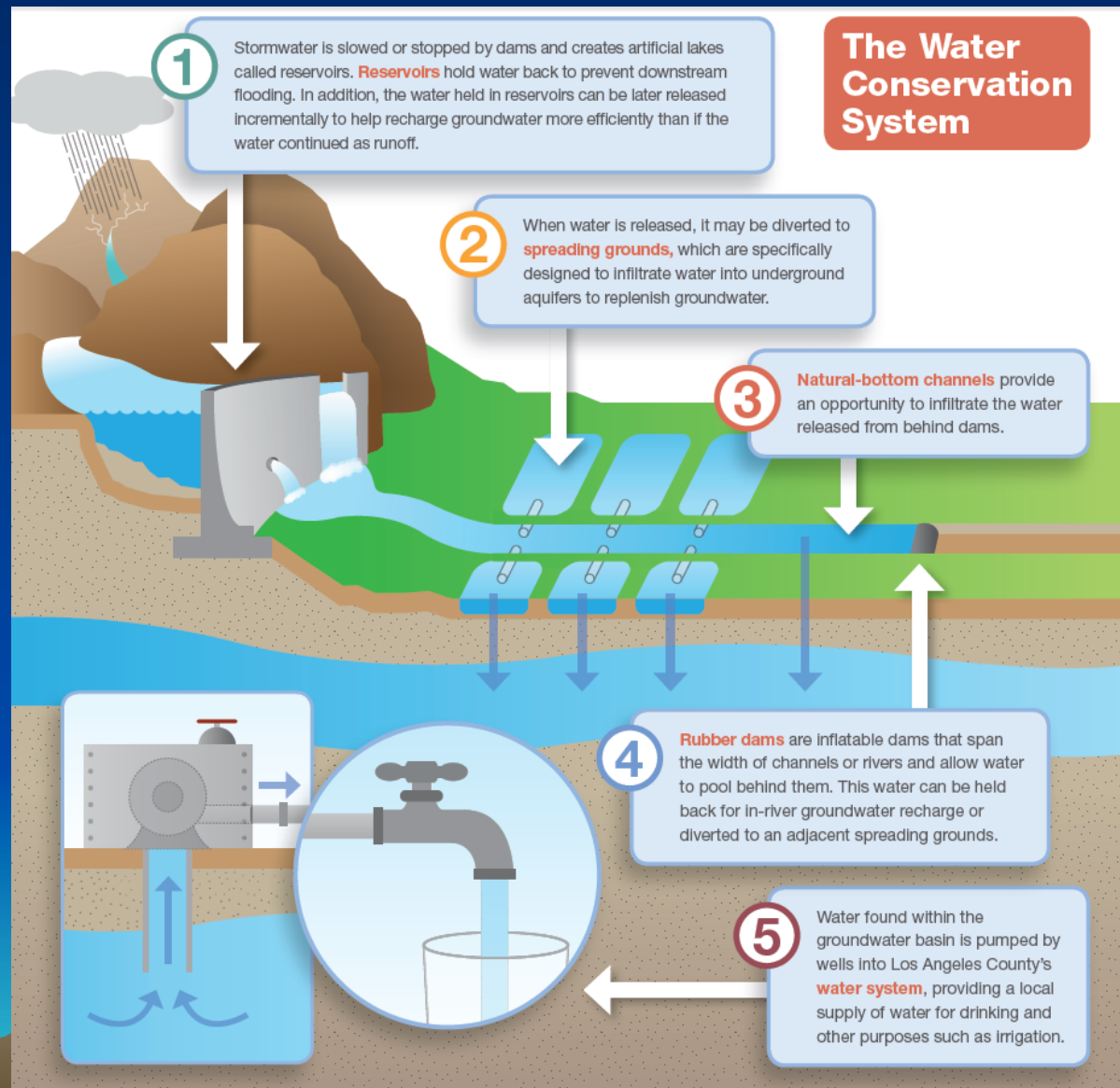
# DEVIL'S GATE TO EATON WATER CONSERVATION PROJECT



Presented by: Ken Zimmer, P.E.



# Flood Control District: Water Conservation and Storage



- 14 Major Dams and Reservoirs
- 27 Spreading Grounds
- 39 Miles of Soft-bottom Channels
- 13 Rubber Dams on Flood Control Channels

# Local Water Supply Sustainability

Two Thirds of Los Angeles County's Water is Imported from Outside the Region

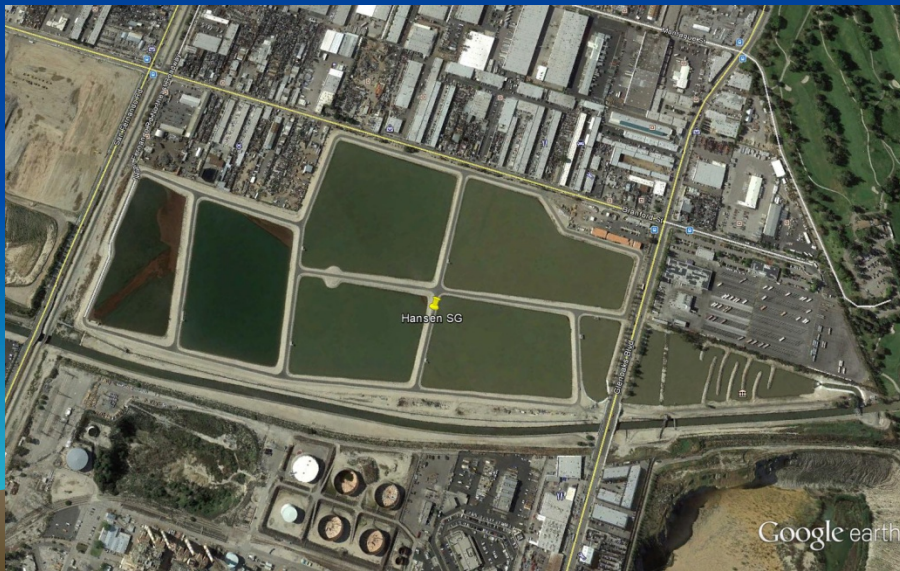
Increasing Stormwater Capture and Groundwater Recharge is Critical to Local Water Supply Sustainability

## Average Water Conservation from Groundwater Recharge (2000 thru 2015)

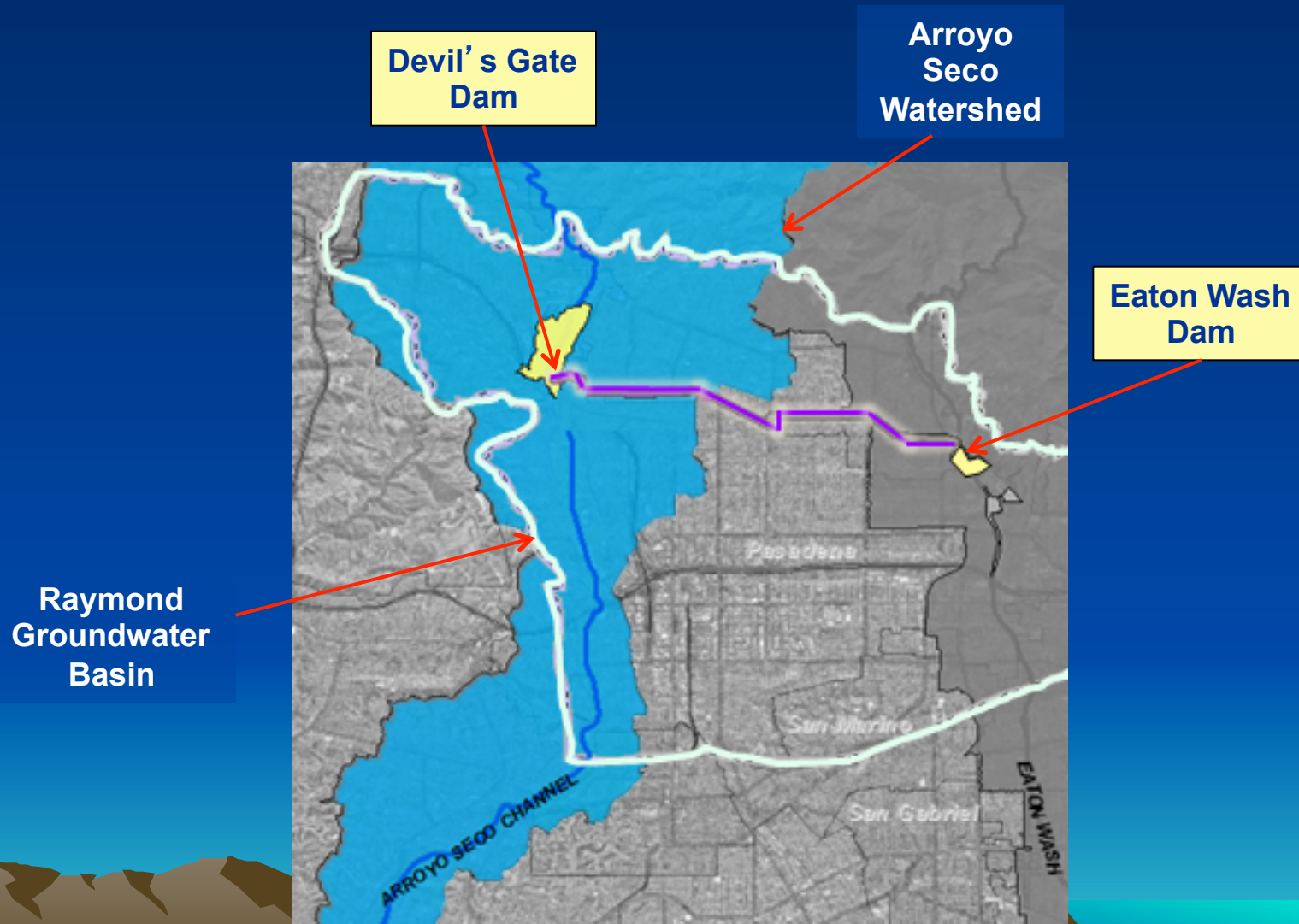
Storm Water	200,000 acre-feet
Imported Water	70,000 acre-feet
Recycled Water	40,000 acre-feet

# Flood Control District Drought Preparation

- 2005 FCD started aggressive groundwater recharge improvement program.
- 22 Projects Completed at a cost of \$37M providing an additional 19,700 AF of expected annual recharge.
- \$7.5M in co-funding from benefiting agencies.



# Devil's Gate to Eaton Water Conservation Project



# Arroyo Seco Wash Looking Downstream from Mountains



# Arroyo Seco Canyon Project

- Restore the diversion and intake structure
- Create restoration of habitat
- Create additional spreading basins
- Construct new recreational parking lot
- Improve passive recreational opportunities





# Arroyo Seco Spreading Grounds



# Eaton Dam and Spreading Grounds

## EATON WASH PROJECT OVERVIEW



# Eaton Dam Seismic Upgrade



# Eaton Dam Seismic Upgrade

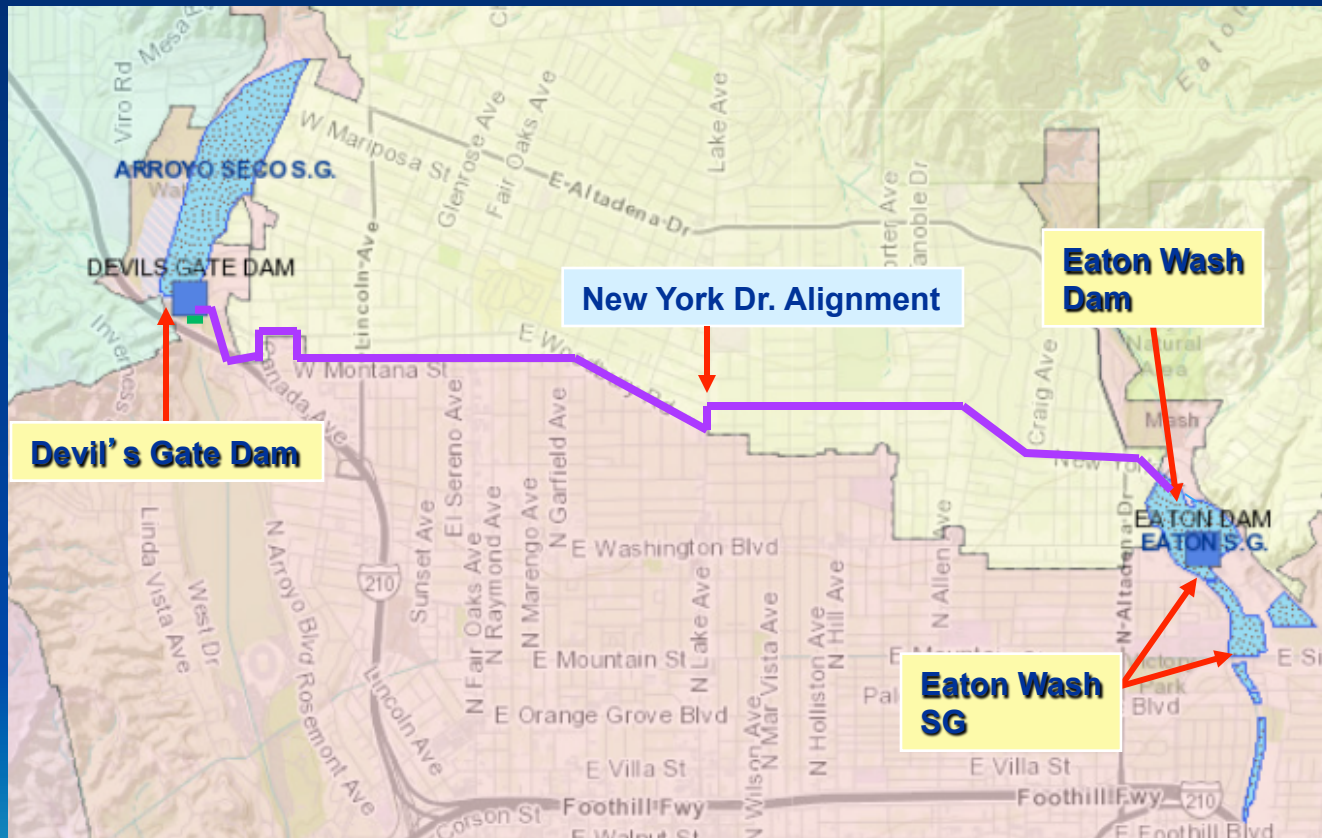


# Eaton Wash Spreading Grounds



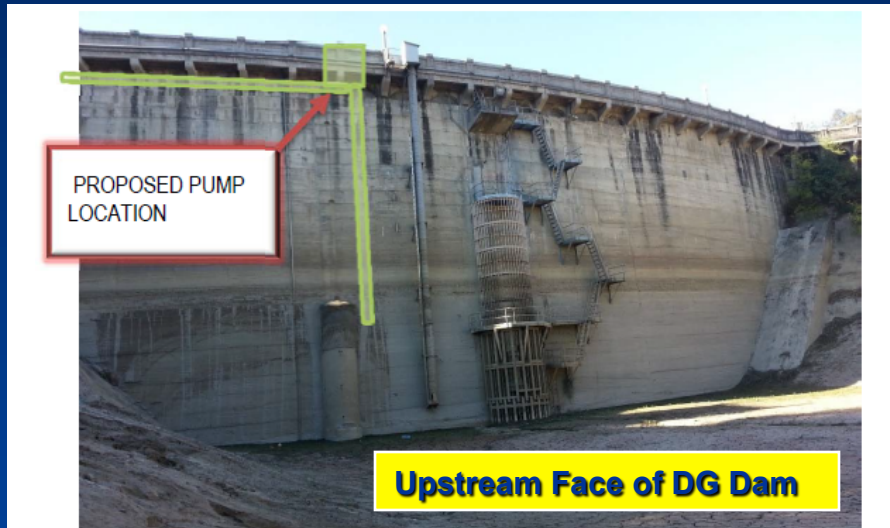
- Capacity: increased from 525 AF to 575 AF
- Intake Capacity: increased from 40 CFS to 125 CFS
- Water Conservation:  
Average = 230 AF/yr  
Wet Year = 1,130 AF

# Pipeline Alignment



- Approximately 6 miles of pipeline alignment
- Split valve at pump for future diversion of water to Arroyo Seco SG

# Pump Station



- Design Capacity: 12,000 gpm or 25 cfs
- Enclosed in pump station structure

# Pipeline Construction and Pumps



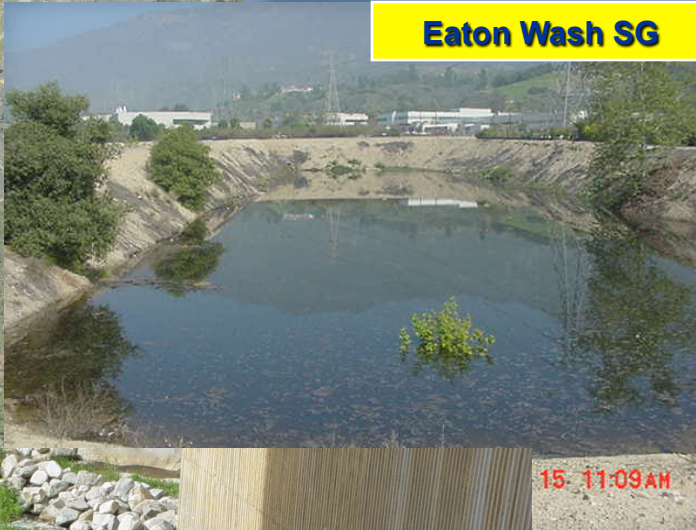


# Water Conservation Benefits

Arroyo Seco SG



Eaton Wash SG



15-11-09 AM



Devil's Gate  
Reservoir

- Outflow records:  
6,900 AF/yr bypassed
- **Water Conservation Study Results:**
- Project total conserve:  
~ 2,400 AF/yr
- Eaton Wash Dam/ SG  
conserve: ~ 1,400 AF/  
yr
- Arroyo Seco SG  
Conserve: ~ 1,000 AF/  
yr

# Project Cost/ Schedule

- Estimated project cost: ~\$16 million
- Partial Reimbursement from State Proposition 1E Grant:

<b>Preliminary Schedule</b>	
<b>Phase</b>	<b>Anticipated Start Date</b>
Planning/ Analysis	Ongoing
Outreach/ CEQA Process	Early 2017
Construction	2019

• QUESTIONS?



**Please be sure you  
signed in**

(if we already have your email  
address, we just need your name)



# Schedule for remaining ACONA Meetings 2016

- Nov 22



Thank you!  
Questions?