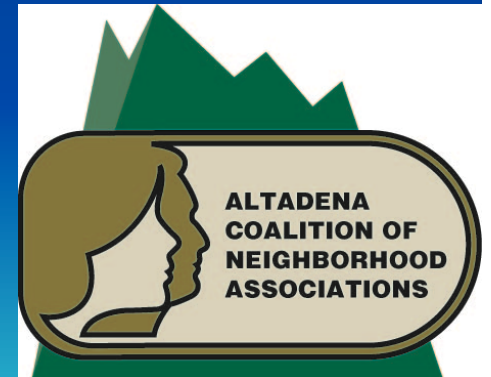


Altadena Coalition of Neighborhood Associations (ACONA)

Let's keep Altadena
*"The best neighborhood in LA
County"!*

May 25 2021



Agenda for Tonight's Meeting

7:00 PM – 8:30 PM

- **7:00 PM – 7:02 PM Quick introductions and welcome**
- **7:02 PM – 7:22 PM What has SCE done so far to prevent future fires and what is SCE doing regarding the drought and lack of water regarding the tree trimming to prevent fires?**
 - **David A. Guzman**- Southern California Edison Operations Manager Vegetation Management
 - **David Ford**- Southern California Edison Operations Government Relations Manager
- **7:22 PM – 7:42 PM Parking Enforcement in Altadena**
 - **Jonathan Gonzalez**, Senior Civil Engineering Assistant Los Angeles County Public Works
 - **Mark S. Skaggs**, Lieutenant Altadena Sheriff's Station
- **7:42PM – 8:02 PM The Drought**
 - **Jennifer Betancourt Torres**, General Manager Lincoln Avenue Water Company
- **8:00 PM – 8:30 PM Q&A**
- **8:30 PM Meeting end**

Your ACONA Team

- Elliot Gold
- Nina Ehlig
- Melody Comfort
- Diane Marcussen
- Captain Marjory Jacobs
- Holly Rundberg
- Carlotta Martin
- Ellen Walton
- Savannah Moore



7:02 PM – 7:22 PM

- **What has SCE done so far to prevent future fires and what is SCE doing regarding the drought and lack of water regarding the tree trimming to prevent fires?**

David A. Guzman - Southern California Edison
Operations Manager Vegetation Management

David Ford - Southern California Edison
Operations Government Relations Manager



Vegetation Management

Public Safety & Wildfire Mitigation

ACONA 5/26/2021

CONFIDENTIAL

WIP

Energy for What's Ahead™





COMPLIANCE UVM PROGRAMS DVMP & TVMP

VM Program Overview

Compliance

Annual inspection schedule. Routine inspection and maintenance tree trimming and/or removal activities. SCE's annual inspection schedule is designed to ensure conformance to applicable regulations (4' minimum vegetation clearance, GO95 Rule 35, PRC 4293, FAC 003-4, Title 14 CCR 1.5, Cal OSHA Title 8 §3423). Semi-Annual Patrols, known as Cycle-buster Inspections, are tracked performed on most routine scheduled inspections. Remediations are targeted for 60 days, where not constrained.

DRI

Frequent (quarterly to annual) circuit-based inspections in selected High Fire Risk Areas (HFRA) to identify tree mortality and remove dead and dying trees affected by drought conditions and/or bark beetle infestation. 2021 consolidation efforts with HTMP will align risk assessment patrols with existing DRI scheduled patrols.

HTMP

Circuit-based inspection of trees in HFRA that are not dead or dying but could nevertheless fall into or otherwise impact electrical facilities and potentially lead to ignitions and outages. Tree hazards are identified by Certified Arborists with Level 2 risk assessments based on tree characteristics (deteriorated trunk, roots or limbs, dead palm fronds, etc.) and site conditions (soils, previous fire damage, high wind areas, etc.).

Pole Brushing

For overall wildfire mitigation, including reducing the risk of ignition, fuel loading, and enhancing protection SCE maintains a 10' x 8'H radial clearance firebreak around all environmentally approved active distribution poles in the HFRA. Regulation (PRC 4292) requires that all "non-exempt" poles shall maintain this clearance. In 2021, SCE will aim to clear all Distribution poles regardless of exemption status.

Clearance Requirements & Additional Routine Compliance Work

Clearances are different for HFRA versus Non-HFRA. Refer to DVMP Tables 1 & 2 for RCD, CCD, TCD & GRCD

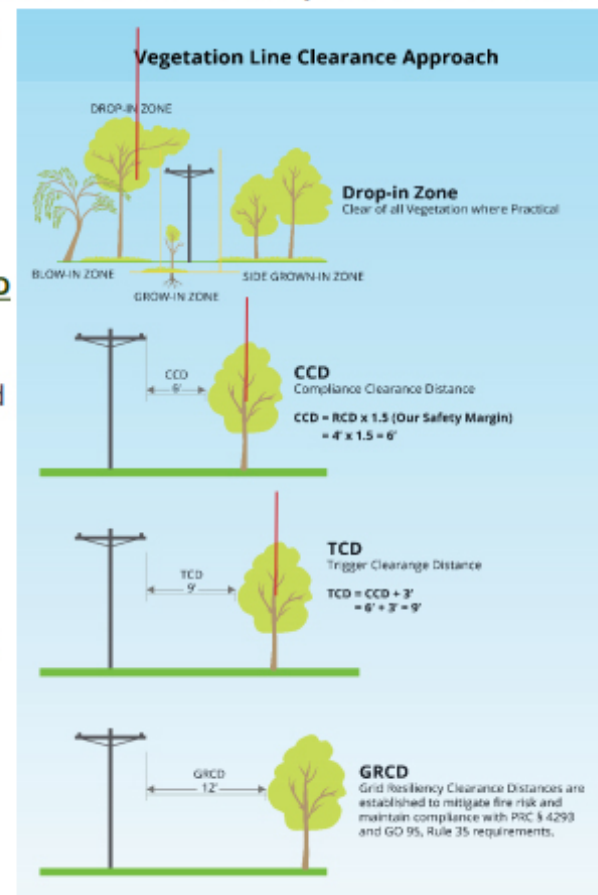
- **RCD is the regulatory clearance distance**
- **CCD is required at all times (SCE's Standard)**
- **TCD Triggers Maintenance work (pruning)**
- **GRCD is to be established at "time of maintenance," when achievable. YOU AFRE REQUIRED TO DOCUMENT WHEN GRCD CANNOT BE ACHIEVED**

Grid Resiliency Clearance Distances (GRCD) are established to mitigate fire risk and maintain compliance with PRC § 4293 and GO 95, Rule 35 requirements.

- GRCD-A and GRCD-B are to be established at time of maintenance
- Trigger Clearance Distance (TCD) triggers the maintenance work (pruning)
- Compliance Clearance Distances (CCD) to be maintained at all times. This is SCE's internal standard

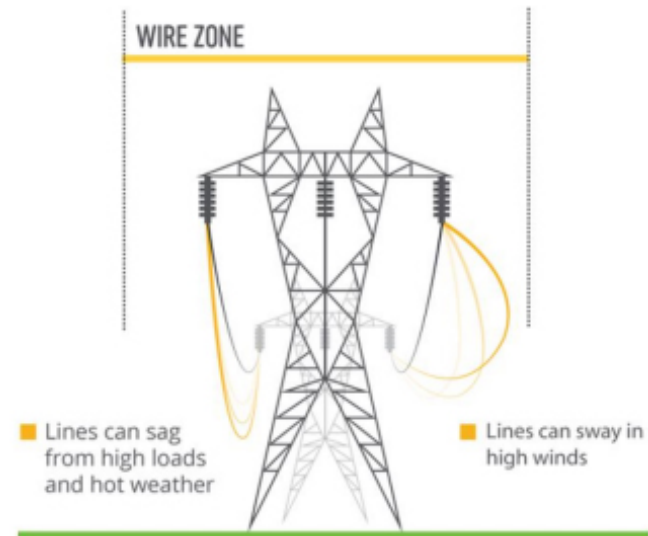
ADDITIONAL ROUTINE COMPLIANCE WORK

- Drop-in Zone is to be cleared of all vegetation as appropriate - Clearing all immature Over Hangs
- Blow in Zone - Rolling Back all Slope Trims
- Secondary Pole to Pole & Pole to House
- Pole Clearances
- Down & Span Guys with Heavy Strain



Conductor Dynamics – Sag & Sway

- SCE shall have documented maintenance strategies or procedures or processes or specifications it uses to prevent the encroachment of vegetation into the RCD that accounts for the following:
 - ✓ Movement of line conductors (sag and sway) under their Rating and all Rated Electrical Operating Conditions (See Figure 1).
 - ✓ Inter-relationships between vegetation growth rates, vegetation control methods, and inspection frequency.



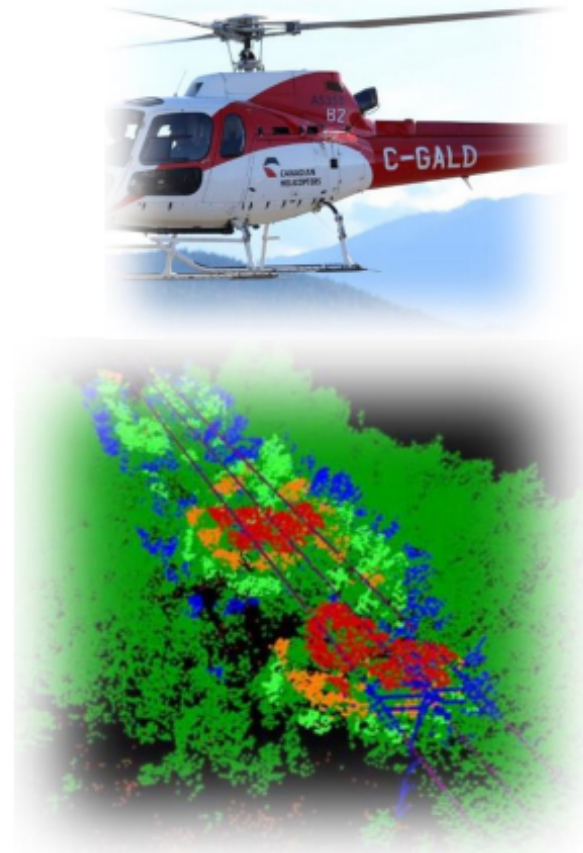
Sag & Sway can be determined using:

- Sag & Sway Tables
- LiDAR

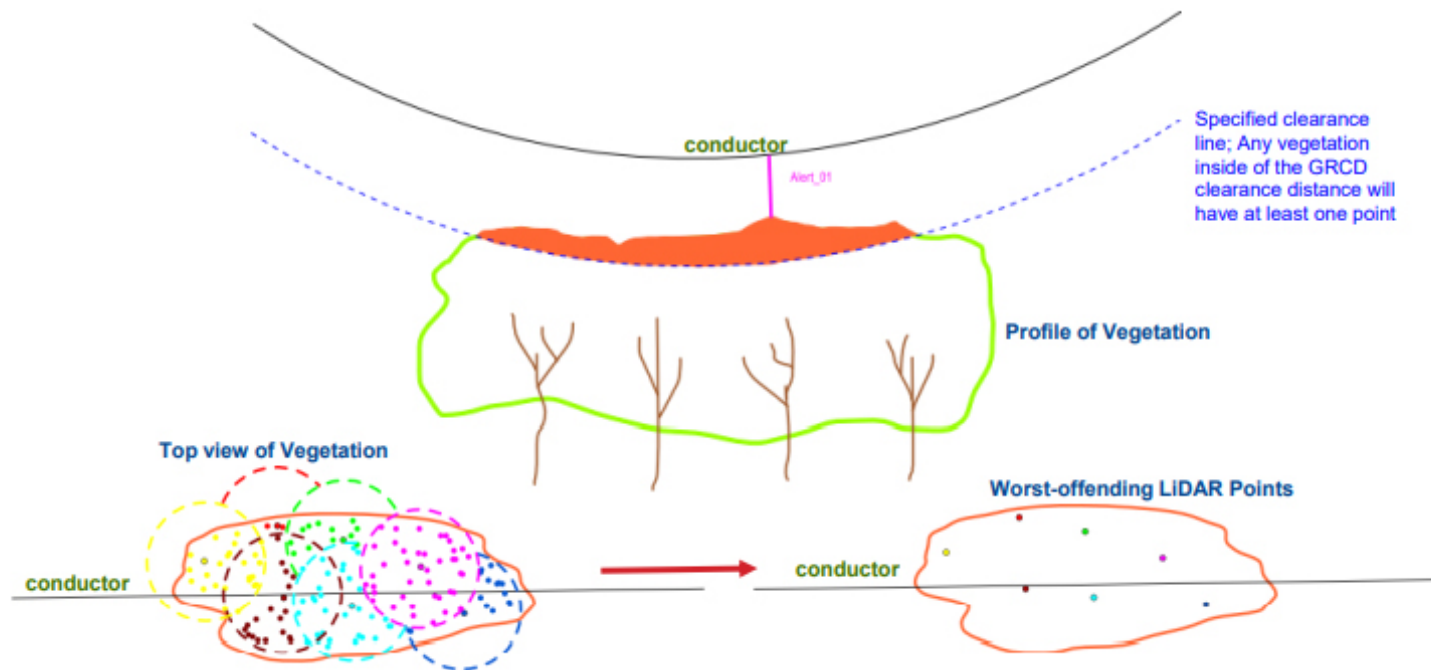
LiDAR is SCE's preferred inspection method

What is LiDAR?

LiDAR stands for ***Light Detection and Ranging***, is a remote sensing method that uses light in the form of a pulsed lasers to measure ranges (variable distances) to the Earth. These light pulses—combined with other data recorded by the airborne system— generate precise, three-dimensional information about the shape of the Earth and its surface characteristics.



LiDAR Data is Collected in Point Clouds and Clustered into Regularly-Spaced Points



A procedure of “merging” individual LiDAR hits into clusters which keeps the worst-offending LiDAR points in an area and reduces the number of LiDAR points that need to be investigated.

Energy for What's Ahead™

Drought Resolution Initiative

Energy for What's Ahead™



Progression of a Dying Trees

Once a tree begins to die, whether from drought or bark beetle infestation, it will be dead in less than 90 days



Invasive Insects

Inspection, Reporting, & Mitigation



SCE Best Work Practice

1. Pre-Work assessments for oaks should include an invasive insect review.
2. If UVM contractors identify signs of invasive insect they must cancel all tree work and immediately notify the local SCE Sr. Specialist for further direction.



Oaks Trees killed by GSOB

Hazard Tree Management Plan

Energy for What's Ahead™



Key Definitions

Tree Risk Assessment – a systematic process used to identify, evaluate and, quantify, Tree Risk

Subject Tree – a green (40% or greater) tree that is located within the Utility Strike Zone

Hazard Tree – a tree identified during a Level 1 or Level 2 Assessment that is located within the Utility Strike Zone and is expected to pose a risk to electric facilities based on its structural condition

Reliability Tree – a subject tree which has a Tree Risk based on site attributes

Utility Strike Zone - An area containing electric facilities from which a tree or a portion of a tree can directly strike electric facilities





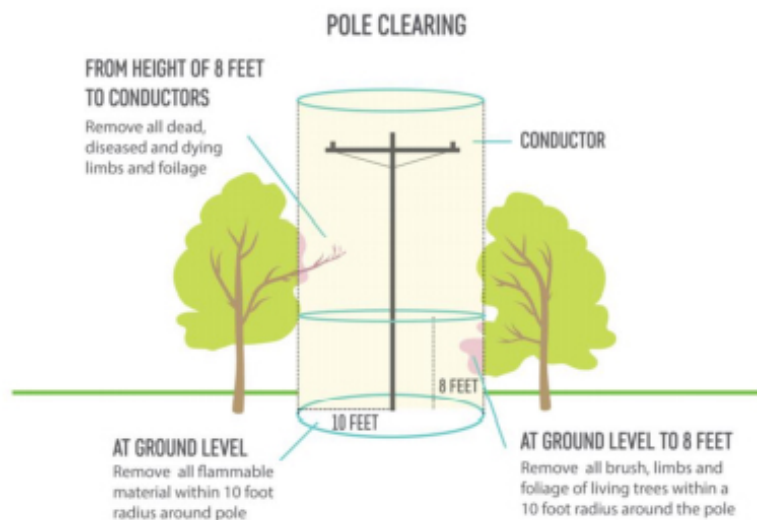
Pole Brushing

Energy for What's Ahead™



PRC § 4292

Any person that owns, controls, operates, or maintains any electrical transmission or distribution line upon any mountainous land, or forest covered land, brush-covered land, or grass-covered land shall, during such times and in such areas as are determined to be necessary by the director or the agency which has primary responsibility for fire protection of such areas, maintain around and adjacent to any pole or tower which supports a switch, fuse, transformer, lightning arrester, line junction, or dead end or corner pole, a firebreak which consists of a clearing of not less than 10-feet in each direction from the outer circumference of such pole or tower.



Supplemental Summer Patrols

Energy for What's Ahead™



SCE Summer Readiness Plan

Supplemental Patrols

Summer Readiness Timeline	JAN	FEB	MAR	APR	MAY	JUN	JUL	AUG	SEP	OCT	NOV	DEC
HFA Canyon Patrols					[Blue bar]							
Operation Santa Ana						[Orange bar]						
Summer Readiness Verification Patrols							[Green bar]					



Energy for What's Ahead™

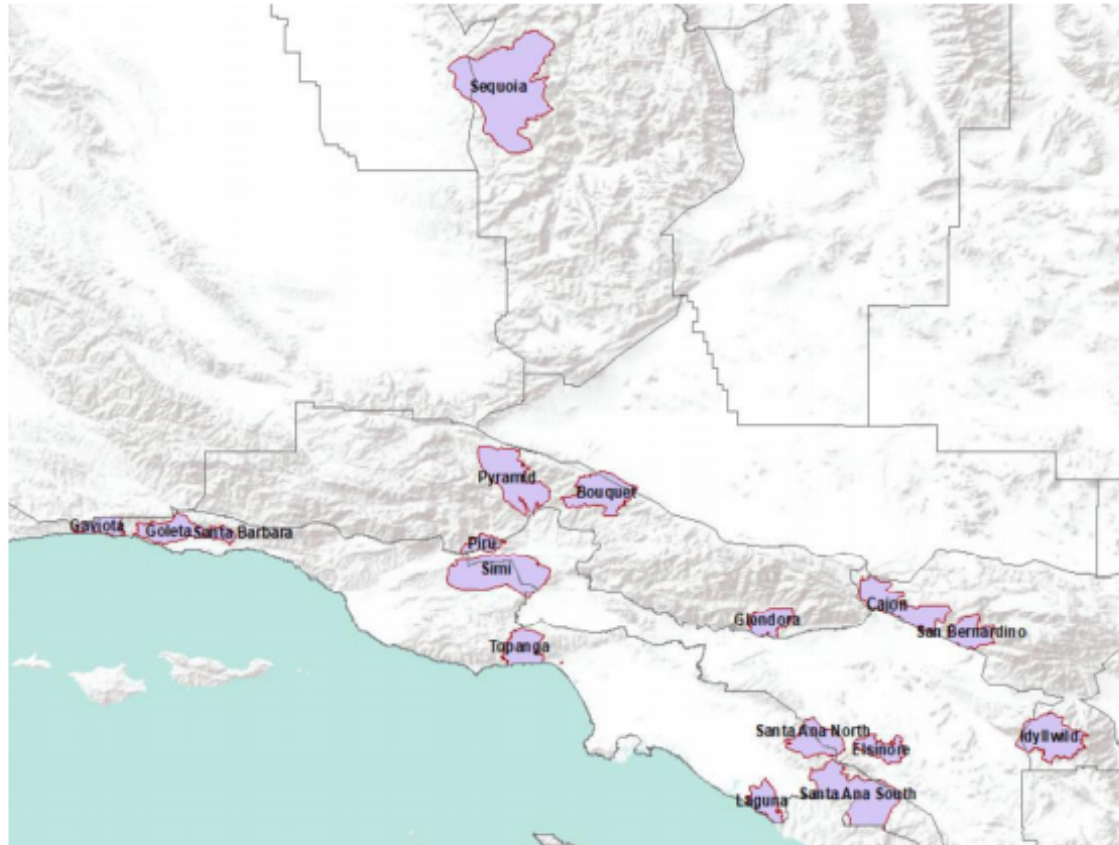


Areas of Concern – Fire Sciences –

So far in 2020, California has experienced a combination of factors that have led to an unprecedented fire season with wildfires burning over 3.5 million acres (3% of the state). Firefighting resources have been stretched to the limit with additional resources being brought in from other areas outside of California including Mexico. While fire season started months ago, peak season is now just beginning as strong winds return to the region.

To help with wildfire mitigation, Southern California Edison has identified multiple areas of concern where major wildfires (size or community impact) could occur within the remainder of the 2020 fire season. A number of activities will be conducted in these areas during the next few weeks to minimize the threat for wildfires. Some of these activities include increased inspections, increased remediation of P2s, accelerated vegetation clearance, etc.





SCE's Fire Sciences has identified 17 Areas Of Concern (AOC) based on the following:

- 1) last time the area has burned
- 2) fire history [frequency and seasonal occurrence]
- 3) vegetation type and amount
- 4) current and expected fuel and weather conditions
- 5) impact to communities and SCE infrastructure
- 6) circuit health and performance



Environmental Compliance

Energy for What's Ahead™



Environmental Coordination



If work will cause a ground disturbance or is in an environmentally sensitive area:



SCE Environmental Services Department assesses all ground disturbing activities for potential environmental sensitivities. The assessments align with federal and state compliance requirements which may include:

- **Biological Resources**
 - Listed and rare plants
 - Listed and sensitive animals
 - Birds and bird nests
 - Plant communities
- **Waterways/Hydrology**
 - Activities within drainages
 - Riparian vegetation
 - Road crossing when wet/off-road crossing
- **Archaeological Resources**
 - Archaeological sites or artifacts
 - Architectural structures
 - Engineered features
 - Places of cultural or religious importance
 - Fossils & paleontological resources
- **Construction Stormwater Management**
- **Public Land Areas**
- **Local Coastal Plan Areas**



Environmental Coordination



SCE Environmental Services Department assesses all ground disturbing and vegetation management activities for sensitive environmental resources. The assessments align with federal, state, and local compliance requirements which may include:

- Biological Resources
 - Listed and rare plants
 - Listed and sensitive animals
 - Birds and bird nests
 - Plant communities
- Waterways/Hydrology
 - Activities within drainages
 - Riparian vegetation
 - Road crossing when wet/off-road crossing
- Archaeological Resources
 - Archaeological sites or artifacts
 - Architectural structures
 - Engineered features
 - Places of cultural or religious importance
 - Fossils & paleontological resources
- Construction Stormwater Management
- Public Land Areas
- Local Coastal Plan Areas

Contacts-

David A. Guzman
David.Guzman@sce.com

David Ford
David.A.Ford@SCE.com



7:22 PM – 7:42 PM
Parking Enforcement in
Altadena

Mark S. Skaggs - Lieutenant
Altadena Sheriff's Station

Jonathan Gonzalez - Senior Civil
Engineering Assistant Los Angeles
County Public Works



Mark S. Skaggs, Lieutenant Altadena Sheriff's Station

- Questions about Altadena



QUESTION FOR PARKING ENFORCEMENT:

Many curbs at street junctions in Altadena are not marked RED. Cars are often parked at the corner of our street (Devonshire/Mariposa) blocking the view for a safe entrance onto Mariposa. What is the law and how can we make these corners safer?



QUESTION FOR PARKING ENFORCEMENT:

An SUV with flat tires sat on Mariposa near Molina for several weeks, maybe more, gathering dust and debris. What is the law and how can citizens report and follow up on abandoned vehicles that take up precious curb real estate?



QUESTION FOR PARKING ENFORCEMENT:

Cheney Trail Road near Millard Camp regularly has cars parked blocking half the road in violation of the posted signs, especially on weekends as hikers crowd the trails. The illegally parked vehicles are **BLOCKING VITAL ACCESS** for fire trucks and fire suppression teams who depend on this access point into the foothills above Altadena/Pasadena. This is also an "Adventure Pass Required" parking area and yet that requirement mostly goes ignored. How can we encourage Parking Enforcement to regulate this dangerously congested road and work with the Forestry Service before this ongoing problem has catastrophic consequences?



Jonathan Gonzalez

Senior Civil Engineering Assistant
Los Angeles County Public Works





Traffic Safety and Mobility Division
Los Angeles County Public Works

Public Works' Role Relating To Parking Restrictions

Public Works' role in responding to parking restrictions include the following:

- Respond to requests for on-street parking restrictions and related traffic concerns
- Review locations and conduct parking demand assessments
- Work with community on requested restrictions (meetings, petitions)
- Process the adoption of traffic regulations for parking restrictions
- Implement parking restrictions, signs and curb markings
- Coordinate with the Sheriff's Department for enforcement

Parking Restriction Options



No Stopping Anytime



No Parking Anytime



Permit Parking



Time Limit Parking



Loading Zone



Preferential Parking District



Temporary Parking Restrictions

Parking Restriction Evaluation Process

PW evaluates parking restrictions with public safety being at the forefront

The typical study procedures are as follows:

- **General Information & Background** is gathered in regards to the request
- **Existing Field Conditions** are evaluated onsite and measurements are taken
- **Request** enforcement of existing parking restrictions
- **Community Sponsored Petitions** are normally used to gather public support for new parking restrictions
 - A $\frac{3}{4}$ majority is needed to implement a new parking restriction
- **Findings & Recommendations** are carried out

Q&A

Jonathan Gonzalez
Traffic Safety & Mobility
Senior Civil Engineering Assistant
(626) 300-4792
Jogonzalez@dpw.lacounty.gov

The Drought in Altadena

Jennifer Betancourt Torres - General
Manager, Lincoln Avenue Water Company



DROUGHT

What does it
mean for
Altadena?



Jennifer Betancourt Torres
General Manager

(626) 798-9101 ext 213
Jennifer@lawc.org

Local Water Companies



Altadena Water Sources



Groundwater
Extraction Well

Metropolitan Water District
F.E. Weymouth Treatment Plant



Consists of State Water Project &
Colorado River Aqueduct Water

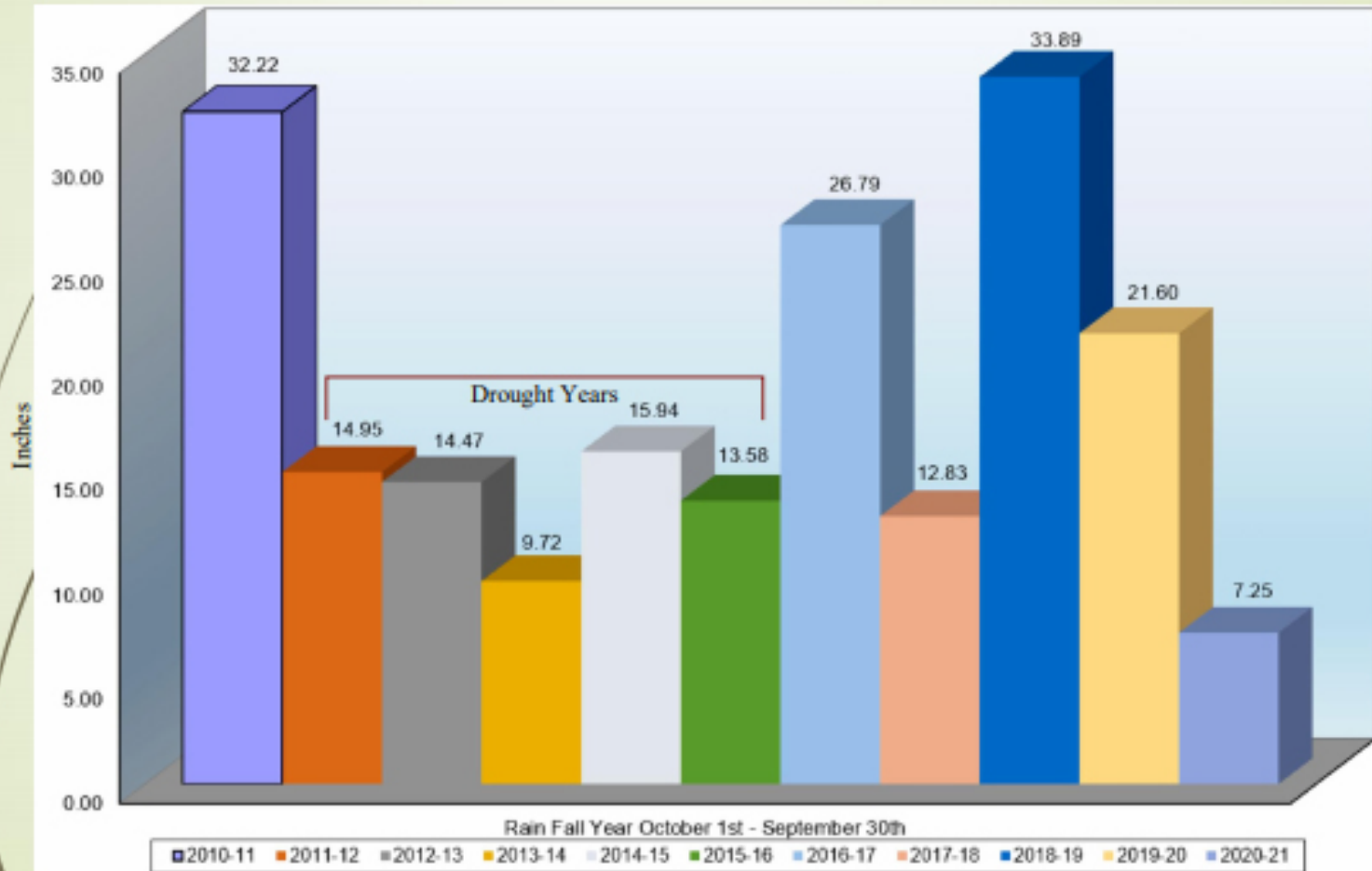


Canyon
Surface
Water

Sources of Water for Southern California



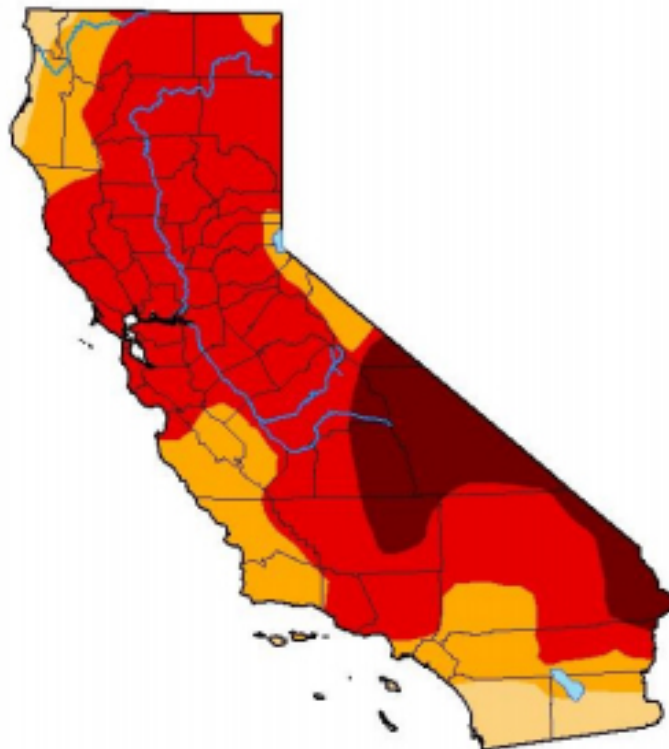
Lincoln Avenue Water Company South Coulter Reservoir Rainfall Gauge




Current Drought Condition

U.S. Drought Monitor California

May 11, 2021
(Released Thursday, May 13, 2021)
Valid 8 a.m. EDT



Intensity:

-  None
-  D0 Abnormally Dry
-  D1 Moderate Drought
-  D2 Severe Drought
-  D3 Extreme Drought
-  D4 Exceptional Drought

The Drought Monitor focuses on broad-scale conditions. Local conditions may vary. For more information on the Drought Monitor, go to <https://droughtmonitor.unl.edu/About.aspx>

Author:

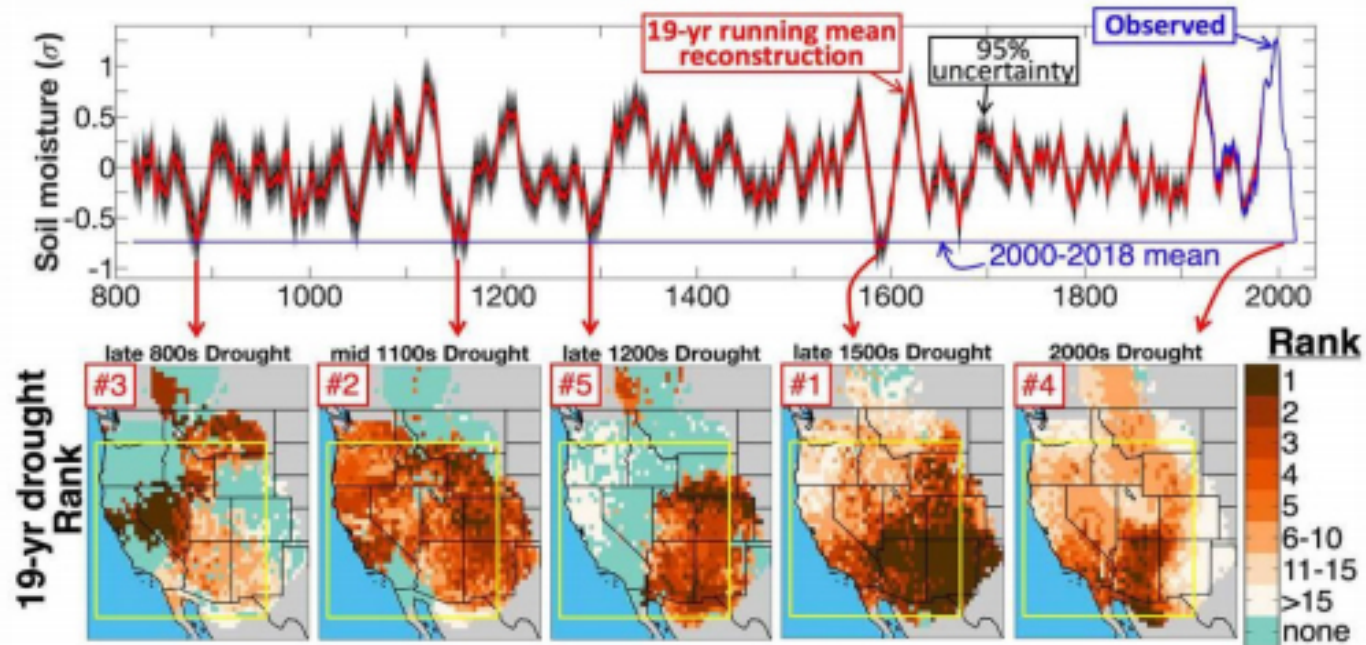
David Simeral
Western Regional Climate Center



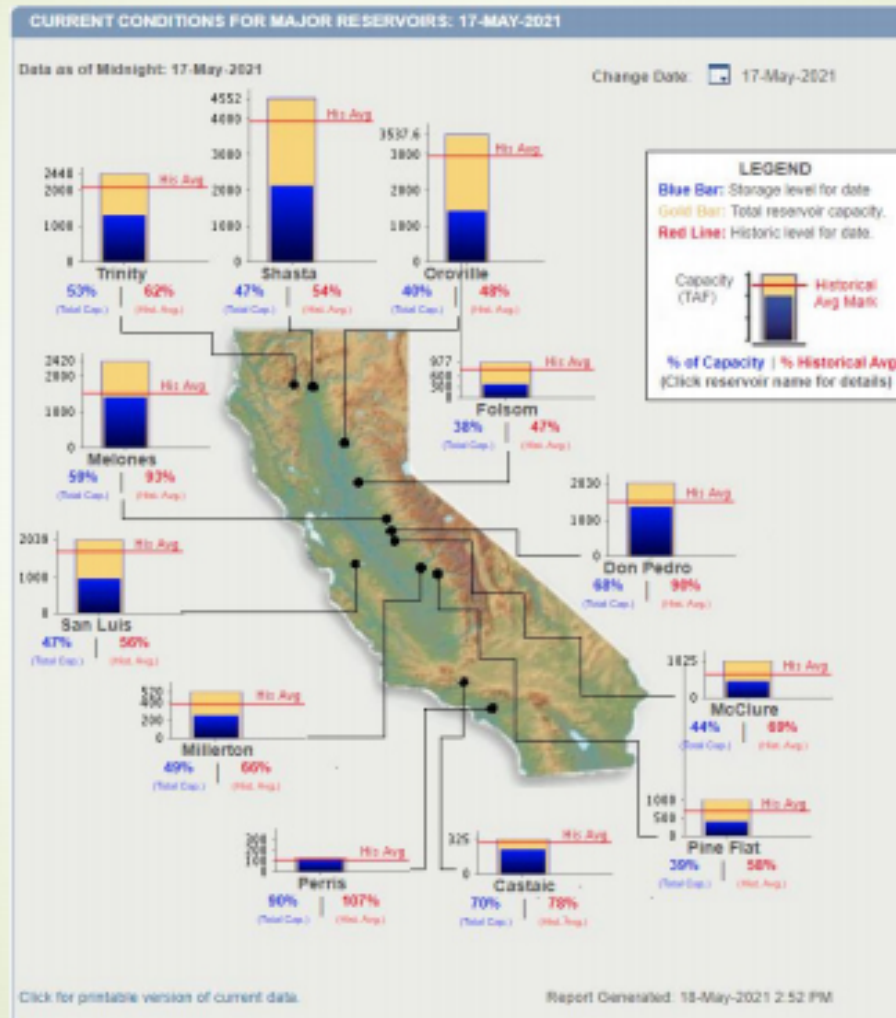
droughtmonitor.unl.edu


Western US Drought History

2000–2018 compared to the most severe 19-yr periods of last millennium's megadroughts



Imported Water Supply





Local Supply

- Groundwater – The basin is adjudicated and monitored by the Raymond Basin Management Board. Each agency is only allowed to pump a certain amount of water rights each year.
- Interagency Groundwater Transfer - allows agencies that aren't able to pump their adjudicated rights to lease water to other agencies within the same basin.
- Surface Water – This source is seasonal and based on precipitation.

Water Use Prohibitions

- Hosing off sidewalks, driveways and other hardscapes.
- Watering landscaping in a manner that causes runoff, or within 48 hours after measurable precipitation.
- Washing vehicles with hose not equipped with a shut-off valve.
- Using non-circulated water in fountains or other decorative water features.
- Irrigating ornamental turf on public street medians

Continuous violation can result in \$100 - \$500 fine

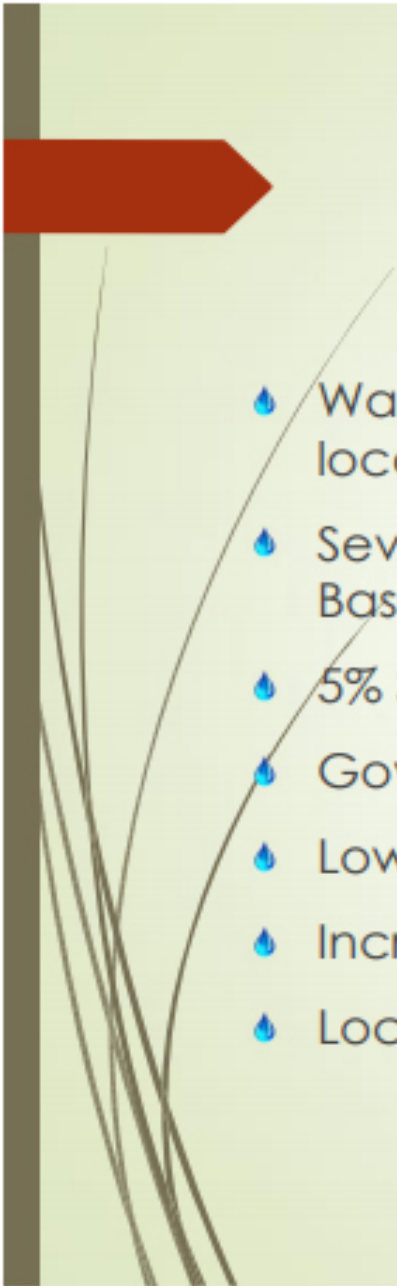
REBATES



www.socalwatersmart.com

- 💧 High-Efficiency Clothes Washers – Rebates start at \$85
 - 💧 Premium High Efficiency Toilets (PHETs) – Rebates start at \$40
 - 💧 Weather-based Irrigation Controllers (WBICs) – Start at \$80/controller
 - 💧 Rotating Sprinkle Nozzles – Can use up to 20% less water than conventional fan spray heads – Rebates start at \$2/nozzle
 - 💧 Rain Barrels & Cisterns – Rebates start at \$35 per barrel (up to 2 barrels) or \$250-350 for a cistern (depending on capacity)
 - 💧 Soil Moisture Sensor System – Rebates start at \$80/ controller
 - 💧 Turf Removal Program -
-

CONCLUSION

- 
- Water Year near record dry - less than eight inches locally
 - Severe drought conditions in both the Colorado River Basin & Northern Sierra
 - 5% State Water Project Allocations
 - Governor Drought Declaration – County by County
 - Low allocations mitigated by MWD storage
 - Increased water demand due to stay at home order
 - Local conservation measures will be necessary
-



Thank you!



Jennifer Betancourt Torres
General Manager

(626) 798-9101 ext 213
Jennifer@lawc.org

Questions?



Next ACONA Meeting Sept 28, 2021

