

Altadena Coalition of Neighborhood Associations (ACONA)

Let's keep Altadena
*"The best neighborhood in LA
County!"*

May 23, 2023



Agenda for Tonight's Meeting

7:00 PM – 8:30 PM

- **7:00 PM – 7:02 PM Quick introductions and welcome**
- **7:02 PM – 7:22 PM The "new" trash service and Altadena's organic waste**
Clark Ajwani Senior Civil Engineer, Los Angeles County Public Works
Matt Blackburn, Universal Waste Systems
John Gasparian Jr., American Reclamation
- **7:22 PM – 8:02 PM Nuccio property acquisition by Polytechnic School**
John Bracker, Head of Polytechnic School
Lisa Wu, Polytechnic's Assistant Head of School, Enrollment & Strategic Initiatives
Holly Williams, Land Use Consultant
Michael Bicay, President of AltadenaWILD
- **8:02 PM – 8:07 PM What topics you want in future ACONA meetings**
- Nicholaus Arnzen, Altadena Town Council and ACONA Planning
- **8:07 PM – 8:30 PM Q&A**
- **8:30 PM Meeting end**

Your ACONA Team

- Elliot Gold
- Nina Ehlig
- Ellen Walton
- Nicholas Arnzen
- Captain Jabari Williams
- Holly Rundberg
- Carlotta Martin
- Sussy Nemer



The "new" trash service and Altadena's organic waste

Clark Ajwani Senior Civil Engineer,

Los Angeles County Public Works

Matt Blackburn, Universal Waste Systems

John Gasparian Jr., American Reclamation





Organic Waste Management

Altadena Coalition of Neighborhood
Associations
May 23, 2023

Agenda

- Overview
- Processing & Facilities
- Capacity Data
- Universal Waste Services (UWS)
- American Reclamation (AR)
- Q&A

New Law on Organic Waste



Senate Bill (SB) 1383: Short-lived Climate Pollutants: Organic Waste Reductions

CA law set goals to reduce methane emissions by reducing organic waste sent to landfills & requires food donations of food that would otherwise be thrown away.

Organic Waste Types



All food & food scraps



Food soiled paper



Manure



Wood

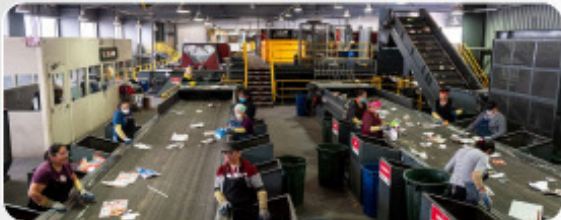


Organic textiles

New Law on Organic Waste (continued)



Types of Organic Waste Processing Facilities



Processing

Advance MRFs
High Diversion MRFs



Organic Waste

Composting
Anaerobic Digestion
Co-Digestion
Chipping & Grinding

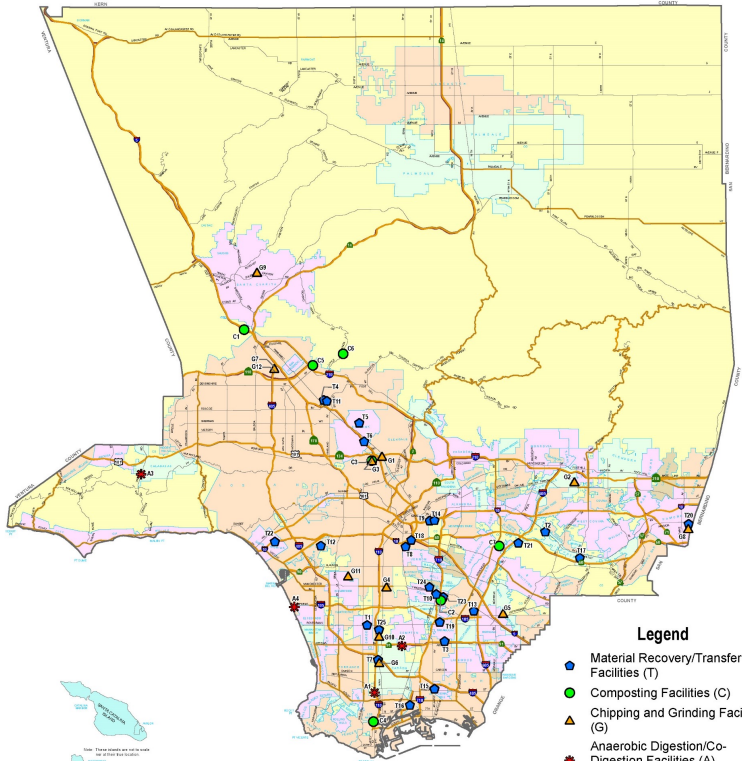


Residuals, Biomass, & Other Organic Waste

Thermal Conversion
Technologies

Organic Waste Processing

County of Los Angeles Regional Organic Waste Capacity Assessment 2021 Report Active Organic Waste Processing Facilities in Los Angeles County by Facility Type



Notes:
1. Refer to Appendix A, Table 1 For List of Active Facilities
2. See Appendix A, Table 5 For List of Facilities to Be Expanded

Source: Los Angeles County Public Works, November 2022

	Estimated Available Organic Waste Processing Capacity	Estimated Additional Organic Waste Processing Capacity Needed
Countywide	4.3 million tons	900,000 tons
CUC	394,000 tons	21,000 tons

Organic Waste Diversion

	Estimated Organic Waste Generation in 2021	Estimated Organic Waste Disposal in 2021	Estimated Organic Waste Diversion in 2021	Estimated Percentage of Organic Waste Diverted in 2021
	A	B	$C = A - B$	$D = C \div A$
Countywide	7.4 million tons	4.5 million tons	3 million tons	40%



3-Container System



Solid Waste



Black Container

Limited to solid waste that is not organic or recyclable

Organic Waste



Green Container

Yard waste, food scraps, food soiled paper

Recyclables



Blue Container

Recyclable bottles, cans, paper, cardboard, some plastics

Universal Waste Services, Inc.



American Reclamation, Inc.



American Reclamation, Inc.



Thank you!



Contact Information:

Los Angeles County Public Works
Environmental Programs Division

CommercialFranchise@pw.lacounty.gov

(888) CLEAN-LA / (888) 253-2652

CleanLA.com



Nuccio property acquisition by Polytechnic School

- John Bracker, Head of Polytechnic School
- Lisa Wu, Polytechnic's Assistant Head of School, Enrollment & Strategic Initiatives
- Holly Williams, Land Use Consultant



POLYTECHNIC SCHOOL

Presentation to **Altadena Coalition of Neighborhood Associations**

May 23, 2023



Who is Poly?

Who We Are

- K-12 school focused on well-rounded education
- A community dedicated to **academic excellence, personal responsibility, and service** to others
- A respected member of Pasadena community with a 115-year track-record
- A longstanding commitment to **environmental stewardship, safety, transparency**



Background on the Site

Nuccio Family

- Decision to wind-down operations
- Family approached Poly as long-term steward

Long-Term Poly Need

- Athletics
- Environmental studies programs
- Health & wellness programming



Our Approach

We are committed
to being a superb neighbor and steward of this land

We are committed
to ensuring the property remains a valuable resource for the community

We are committed
to prioritizing public safety and delivering a best-in-class fire safety program

We are committed
to a proactive, inclusive, and transparent process

The Property

- Privately owned 80-acre site



AERIAL VIEW

DRAFT - FOR DISCUSSION PURPOSES ONLY

Ideas We're Exploring

For Poly High School Students

- A baseball field
- Seven tennis courts
- A multipurpose field with a running track

For Poly Middle & High School Students

- An outdoor education facility
- Environmental science classrooms



Community Benefits We're Exploring

Commitment
to land
conservation

Public trail
dedication,
improvements
& maintenance

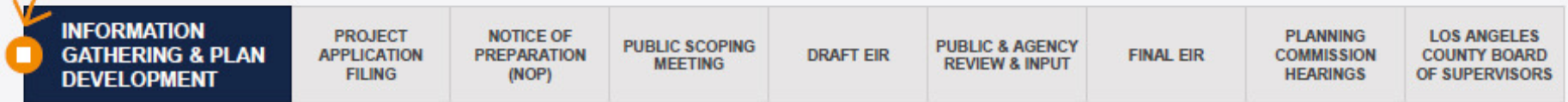
Partnerships

Fire
suppression
& resiliency
infrastructure

Trailhead
parking
and public
bathrooms

Where are we in the process?

We are here.



Altadena Town Council
Hearings and Public Meetings

Addressing Community Concerns

Fire Safety
(VHFHSZ)

Traffic &
Street Safety

Lighting
& Sound
*(Meet Rural
Lighting Standards)*

Protecting
Environment
*(SEA and
Significant Ridgeline)*



POLYTECHNIC SCHOOL

Building Trust Through Dialogue





Michael D. Bicay, Ph.D.
President, AltadenaWILD Inc.

2023.05.23

Altadena Coalition of Neighborhood Associations

www.AltadenaWILD.org

The End of An Era



October 11, 2022

Dear neighbors,

We are reaching out to the Aladena community to share important news about Nuccio's Nurseries and the future stewardship of the Nuccio family property off Chaney Trail.

After serving the community since 1955, the Nuccio family has decided to wind down operations of the nursery in the coming years. While no closure is imminent, we expect to phase out the business in the next two to three years.

In planning for the future, it has been a steadfast priority to pass custodianship of this remarkable property to an owner who will honor both the land and the surrounding community. The Nuccio family is quite pleased to have found the next generation owner.

Polytechnic School, serving kindergarten through grade 12 students from its main campus in Pasadena since 1907, sees a once-in-a-generation opportunity to advance the mission of the school and improve its outdoor education, environmental science, athletics, and wellness programs. The intended vision for the site is to include carefully designed athletic facilities, as well as dedicated learning spaces to offer experiential learning in sustainability, environmental science, and related fields.

Poly is committed to being a superb neighbor and steward of this land and intends to utilize the same general footprint as the current nursery – a small portion of the 80-acre site. Among its guiding principles will be to ensure the property remains a valuable resource for the community, that neighboring public hiking trails will remain fully accessible, and to protect the native undeveloped land and the plant and animal species living within it.

The school has begun a multi-year, extensive process to plan for the future of the property. It is important to all of us that neighbors and other stakeholders play an active role in the effort to ensure the community's needs and priorities are respected. In the coming months, Poly will begin a comprehensive community engagement effort regarding the property that will be proactive, inclusive, and transparent at all stages. We plan to host a neighborhood gathering at Nuccio's Nurseries and invite you to attend with any questions. More information will be forthcoming as event details are confirmed.

Poly's 115-year history as a premier educational institution and a respected and supportive member of the Pasadena community convinced the Nuccio family it will uphold its role in Aladena, as well. We are excited for what the future holds.

Sincerely,

Joe Nuccio
Representative, The Nuccio Family

John Brucker
Head of School, Polytechnic School



“Poly is committed to being a superb neighbor and steward of the land...”

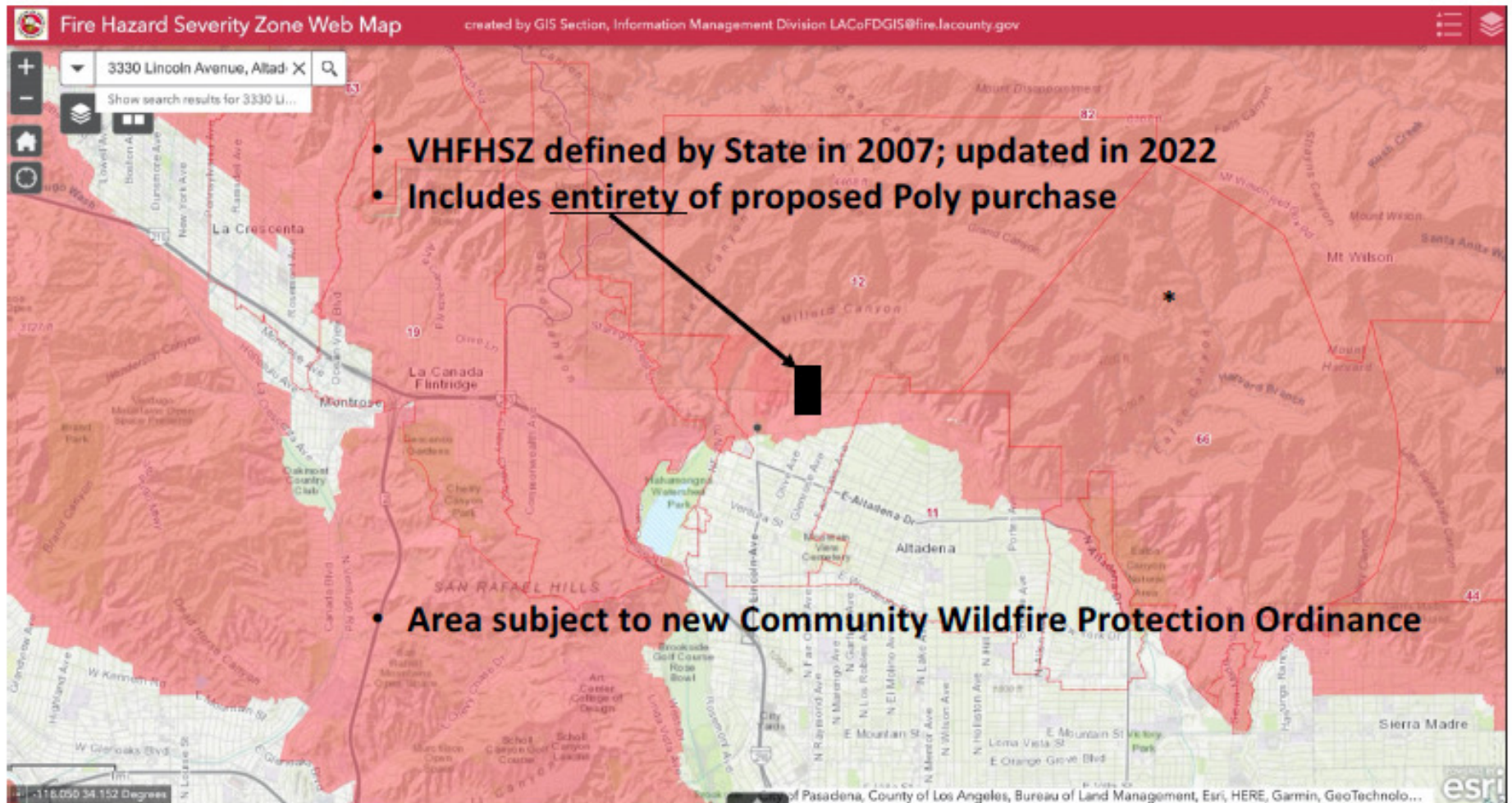
“...intends to utilize the same general footprint as the current nursery.”

“...neighboring public hiking trails will remain fully accessible.”

“....protect the native undeveloped land and the plant and animal species living within it.”

Sounds benign....So Far

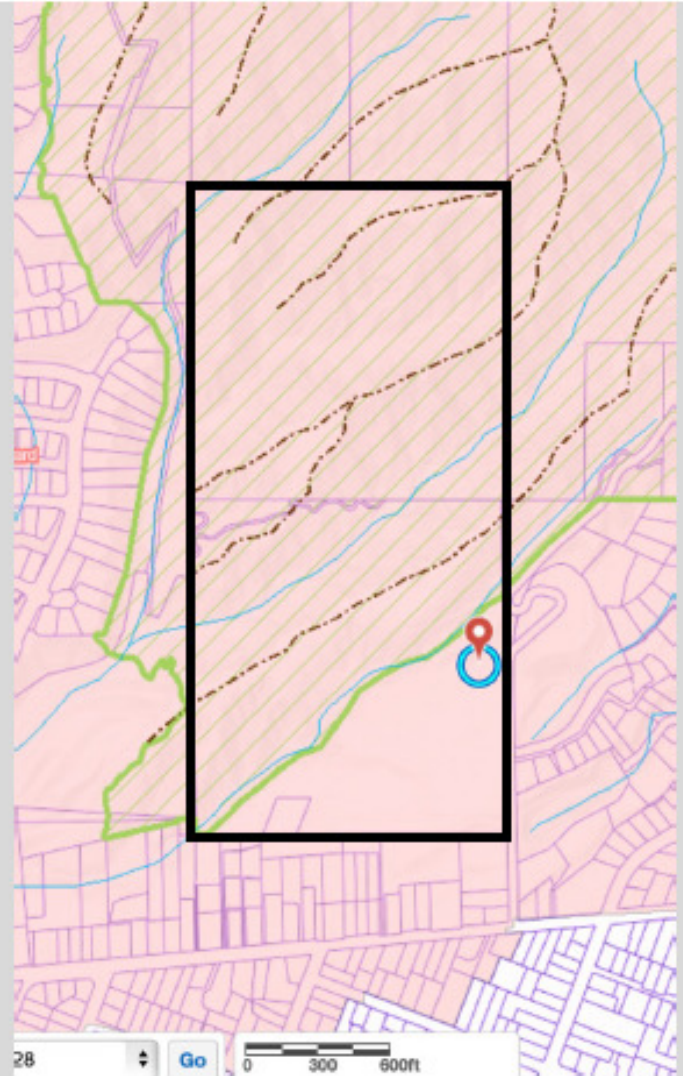
VHFHSZ: Very High Fire Hazard Severity Zone





Property sought by Polytechnic School in northern Altadena. Green line denotes boundary adjoining Angeles National Forest. Photo courtesy of L.A. County GIS-NET Public; annotation by AltadenaWILD.

- Development site is in a State-designated **Very High Fire Hazard Severity Zone** (*pink*)
- The property **adjoins the Angeles National Forest**
- 80% of the property is within the **Altadena Foothills and Arroyos Significant Ecological Area** (*hatched green*)
- 70% of the property falls within County-designated **Hillside Management Areas**
- The property contains five County-designated **Significant Ridgelines** (*brown dashes*)
- The property contains **seasonal streams** that drain into Arroyo Seco (*blue*)
- The property is home to flora and fauna **rich in biodiversity**
- The property is part of vital **wildlife migration corridors**





Chaney Trail is a Single-Egress Evacuation Route

- No sidewalks
- Many hikers, cyclists, equestrians (and llama-walkers!)...7 days a week
- Narrow! Only **17-feet wide** at southern end
- Blind hills
- Already dangerous

Significant Concerns

If the proposed plans are approved by Los Angeles County, these developments will:

- **INCREASE THE DENSITY OF PEOPLE** in a very high-risk fire zone
- **INCREASE WILDFIRE RISKS** in nearby neighborhoods where residents are accustomed to practicing a culture of wildfire safety
- **INCREASE TRAFFIC** on Chaney Trail, Loma Alta Drive, and on major north-south routes from Pasadena to northern Altadena
- **INCREASE THE RISKS OF ACCIDENTS** involving vehicles and hikers/cyclists/equestrian riders on Chaney Trail and Loma Alta Drive
- **IMPACT WILDLIFE AND MIGRATION** in the surrounding foothills and in Angeles National Forest
- **CREATE NOISE AND LIGHT POLLUTION** in the surrounding neighborhoods, foothills and forest

Vision >>> Preliminary Plans >>> Plans

January 29

March 14

Date TBD

- **Multi-Use Sports Stadium**
- **Baseball Stadium**
- **Eight Tennis Courts**
- **Support/Storage Buildings**
- **Spectator Seating**
- **Lighting & Amplified Sound**
- Possible/Under Study:
 - Subterranean Parking
 - Environmental Sciences Classrooms

- **Multi-Use Sports Stadium**
- **Baseball Stadium**
- **Eight Tennis Courts**
- **Support/Storage Buildings**
- **Spectator Seating**
- **Lighting & Amplified Sound**
- **Subterranean Parking**
- **Environmental Sciences Classrooms**
- **Locker Rooms, Weight Training**
- **Chaney Trail Sole Ingress/Egress**
- Possible/Under Study
 - Amphitheater
 - Fire-Control Support Building
 - Equestrian Support Station
 - Public Bathrooms
 - Parking for Hikers
 - Nuccio Tribute

From Poly Website

"...this site will offer us the opportunity to provide athletic facilities and a home for teams that currently practice and compete off-campus or on undersized fields."

No images? Click here



POLYTECHNIC SCHOOL



Altadena Project Update: May 2023

May 3, 2023

Dear Poly community,

We write today to provide an update on the process of acquiring Nuccio's Nurseries, a remarkable property in the Altadena foothills. As you know, we believe this location can serve as a wonderful space for educational and athletic opportunities for Poly students and a unique outdoor community asset for Altadena.

In developing our vision for the site, we are looking to elevate Poly's sports and wellness programs, provide experiential learning in environmental science and sustainability, and ensure that our plans are sensitive to the natural environment and surrounding neighborhood. Initial plans continue to embrace the important principles we shared in the fall:

- Respecting and preserving the ecology and natural habitat of the property;
- Ensuring the site remains a valuable resource for the Altadena community;
- Engaging closely and proactively with our Altadena neighbors and other stakeholders to help shape our plan.

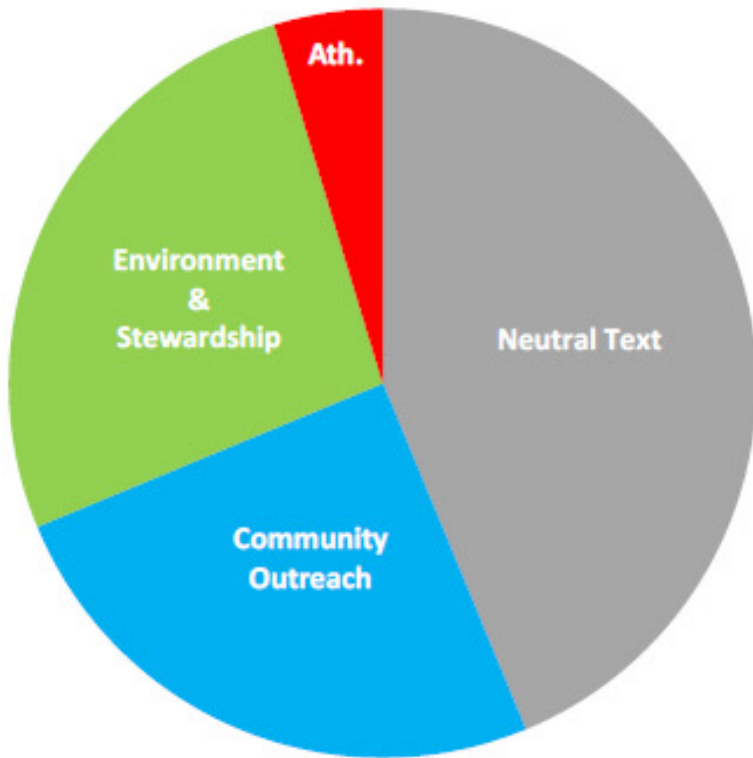
“Some residents, quite vocally, have rejected our efforts to engage, claiming erroneously that we are simply looking to build an ‘athletics stadium.’”

“We firmly believe that Poly represents the best opportunity to develop the site in a way that benefits the Altadena community as a whole.”

Stadium (noun):

A sports arena or field with seats for spectators.

Parsing 2022 October 11 Letter



■ Neutral Sentence
 ■ Community Outreach
 ■ Environment/Stewardship
 ■ Athletic Facilities



October 11, 2022

Dear neighbors,

We are reaching out to the Aladena community to share important news about Nuccio's Nurseries and the future stewardship of the Nuccio family property off Cheney Trail.

After serving the community since 1935, the Nuccio family has decided to wind down operations of the nursery in the coming years. While no closure is imminent, we expect to phase out the business in the next two to three years.

In planning for the future, it has been a steadfast priority to pass custodianship of this remarkable property to an owner who will honor both the land and the surrounding community. The Nuccio family is quite pleased to have found the next generation owner.

Polytechnic School, serving kindergarten through grade 12 students from its main campus in Pasadena since 1907, sees a once-in-a-generation opportunity to advance the mission of the school and improve its outdoor education, environmental science, athletics, and wellness programs. The intended vision for the site is to include carefully designed athletic facilities, as well as dedicated learning spaces to offer experiential learning in sustainability, environmental science, and related fields.

Poly is committed to being a superb neighbor and steward of this land and intends to utilize the same general footprint as the current nursery – a small portion of the 80-acre site. Among its guiding principles will be to ensure the property remains a valuable resource for the community, that neighboring public hiking trails will remain fully accessible, and to protect the native undeveloped land and the plant and animal species living within it.

The school has begun a multi-year, extensive process to plan for the future of the property. It is important to all of us that neighbors and other stakeholders play an active role in the effort to ensure the community's needs and priorities are respected. In the coming months, Poly will begin a comprehensive community engagement effort regarding the property that will be proactive, inclusive, and transparent at all stages. We plan to host a neighborhood gathering at Nuccio's Nurseries and invite you to attend with any questions. More information will be forthcoming as event details are confirmed.

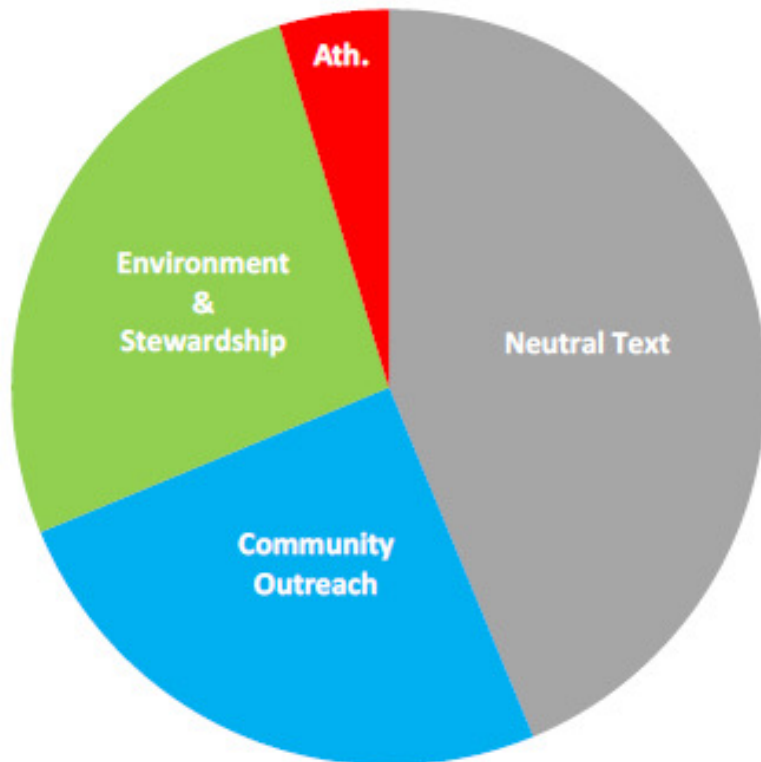
Poly's 115-year history as a premier educational institution and a respected and supportive member of the Pasadena community convinced the Nuccio family it will excel in this role in Aladena, as well. We are excited for what the future holds.

Sincerely,


 Joe Nuccio
 Representative, The Nuccio Family

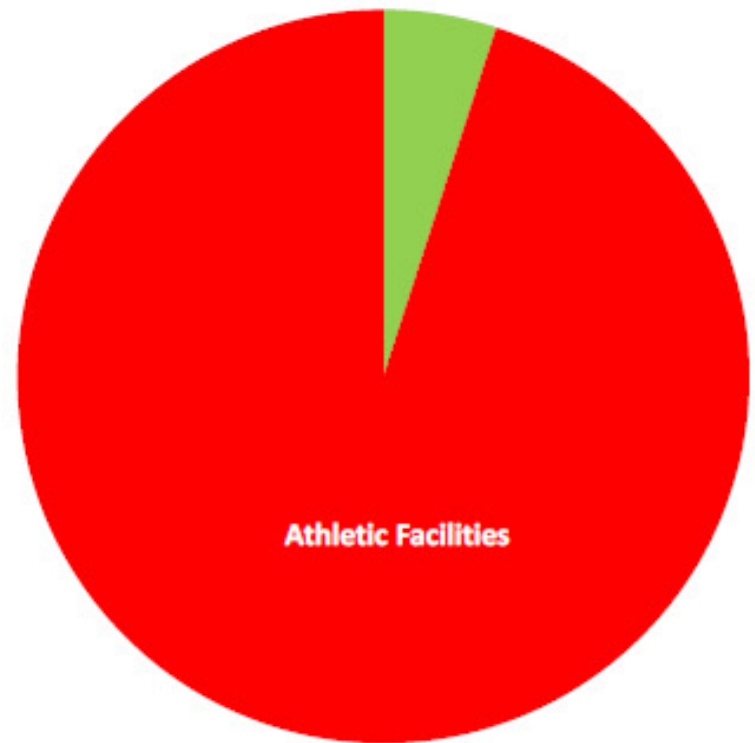

 John Bracker
 Head of School, Polytechnic School

Parsing 2022 October 11 Letter



■ Neutral Sentence ■ Community Outreach ■ Environment/Stewardship ■ Athletic Facilities

Impact on Altadena



■ Environment/Stewardship ■ Athletic Facilities

WUI Impacts

The Sports Complex, even if limited to 13+ acres of the current nursery, will greatly impact the remaining 65 acres of wildlands + neighborhoods + Altadena foothills + Angeles National Forest.



Representative depiction only;
not actual Poly plans.



Representative depiction only;
not actual Poly plans.

A Sports Complex cannot (generally) be MITIGATED.

**Lighting and noise pollution will affect wildlife and their migration corridors,
and pollute a County Rural Outdoor Lighting District**

From Pasadena/Poly Master Plan (2017), Appendix B, Section I.10.c
“Outdoor night-time lighting of any event on the field is prohibited.”



A Sports Complex in the Altadena Foothills?



Altadena Community Standards (LACC 22.306)

“The ACS District is established to ensure that new and expanded structures are compatible in size and scale with the characteristics of surrounding residential neighborhoods, protecting the light, air, and privacy of existing single-family residences from negative impacts.....”

L.A. County 2035 General Plan

Guiding Principle #1 (of 5): Employ Smart Growth

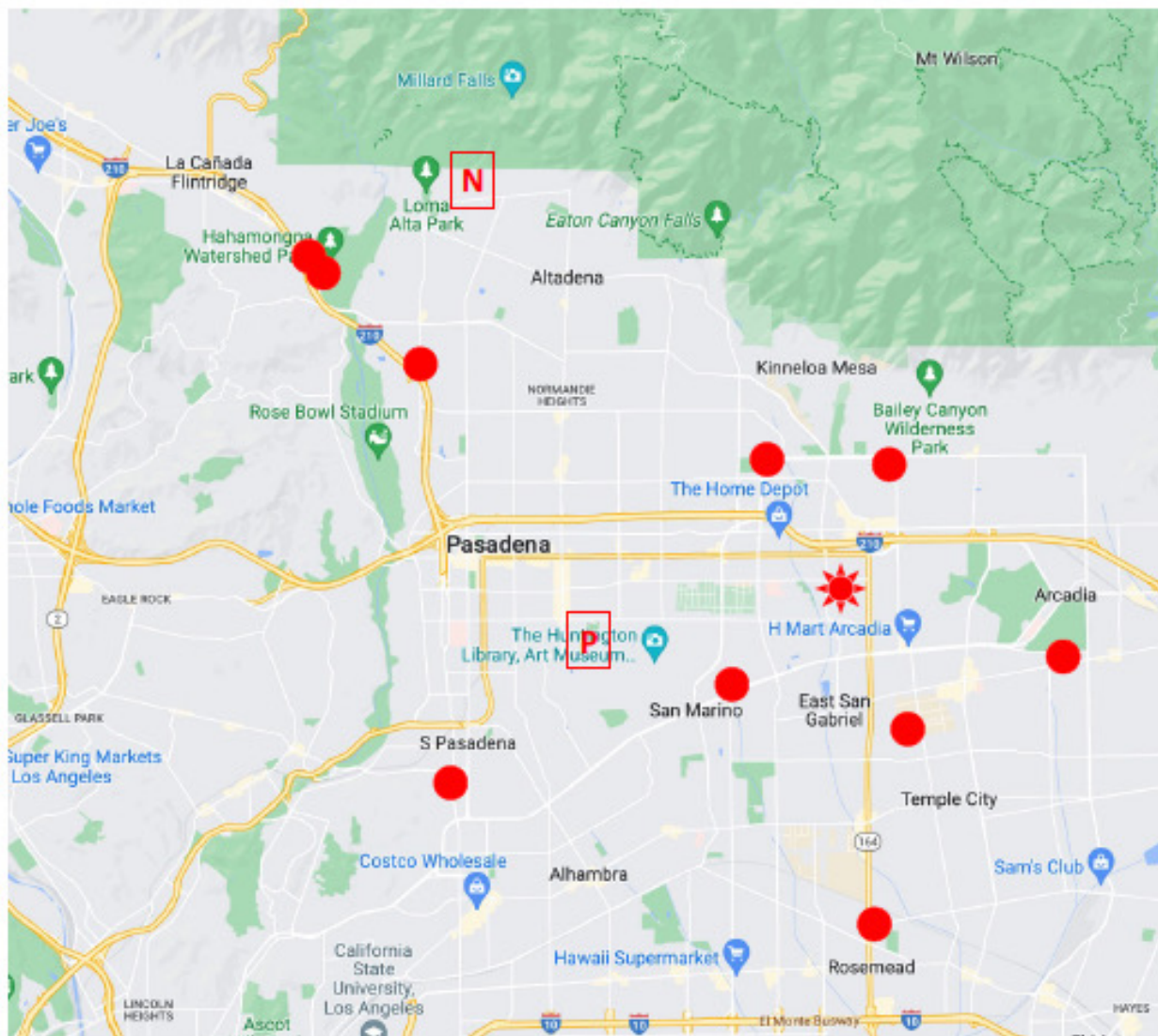
“Shape new communities to align housing with jobs and services; and protect and conserve the County’s natural and cultural resources, including the character of rural communities. The General Plan implements smart growth by using strategies that are tailored to each community.....In rural areas, land uses and developments that are compatible with the natural environment and landscape will maintain existing community character.”

Chapter 9: Conservation & Natural Resources

“The County must act as the steward for [its] natural resources and available open space areas, and conserve & protect these lands & resources from inappropriate development patterns.”

Chapter 12: Safety Element

“Policy S 4.20: Prohibit new and intensification of existing general assembly uses in VHFHSZs unless: (1) the use is located in an existing approved specific plan or (2) the County determines there is sufficient secondary egress and the County determines the adjoining major highways and street networks are sufficient for evacuation, as well as safe access for emergency responders under a range of emergency scenarios, as determined by the County.”



FACT

- 10 Existing HS Sports Complexes Closer to Poly than Chaney Trail Property
- San Marino HS 3.0 miles
- South Pasadena HS 3.1
- Pasadena HS 3.6
- Muir HS 4.3
- LaSalle Prep 4.6
- Temple City HS 4.6
- Arcadia HS 5.6
- La Canada HS 6.3
- St. Francis HS 6.4
- Rosemead HS 6.6
- Nuccio's Nursery 6.9

- ★ Vacant School Campus
- PUSD Wilson MS
- 14.8 acres (usable)

NO!

POLYTECHNIC SCHOOL

SPORTS COMPLEX
on
CHANEY TRAIL

Altadena Foothills Are Worth Protecting!



www.AltadenaWILD.org



NO!

POLYTECHNIC SCHOOL

SPORTS COMPLEX
in
ALTADENA FOOTHILLS

Altadena Foothills Are Worth Protecting!



www.AltadenaWILD.org



A Better Idea – True Conservation & Preservation

A haven where:

- Hikers, bicyclists, equestrians continue to enjoy established trails
- Park-poor neighborhood residents and nature-loving visitors have increased access to local open space
- Wildlife thrives and their migration patterns remain undisturbed
- Streams flow freely and the soil continues to absorb and store rainwater – rather than being hardscaped
- Native plants may be propagated and grown for residential and commercial landscapes
- The Altadena Community Garden could potentially expand
- A 90-year legacy of Nuccio's Nursery will continue into perpetuity



Alternative options for Chaney Trail site

- Nature Conservancy Purchase
 - Protect 78 acres Altadena Foothills
- Public-Private Purchase
 - Protect 65 acres Altadena Foothills
 - Lease 13 acres to private entity that aligns with wildlands/foothills
- Public-County-State partnerships

Altadena Group Opposes Proposed Pasadena Poly Sports Complex

BY ANDRÉ COLEMAN, MANAGING EDITOR
Published on Thursday, March 30, 2023 | 6:05 am

[Pasadena Now \(March 30\)](#)

An Open Letter to Polytechnic School: You're not reading the room

By Ellen Snortland, Pasadena Weekly Columnist Apr 27, 2023

[Pasadena Weekly \(April 27\)](#)

OPINION

SUBSCRIBER ONLY

Scrappy Altadena residents, Pasadena Polytechnic face off over turning Nuccio's Nursery into athletic complex

[Pasadena Star-News \(April 19\)](#)

COURIER

EST. 1854

[PCC "The Courier" \(May 1\)](#)

Search here

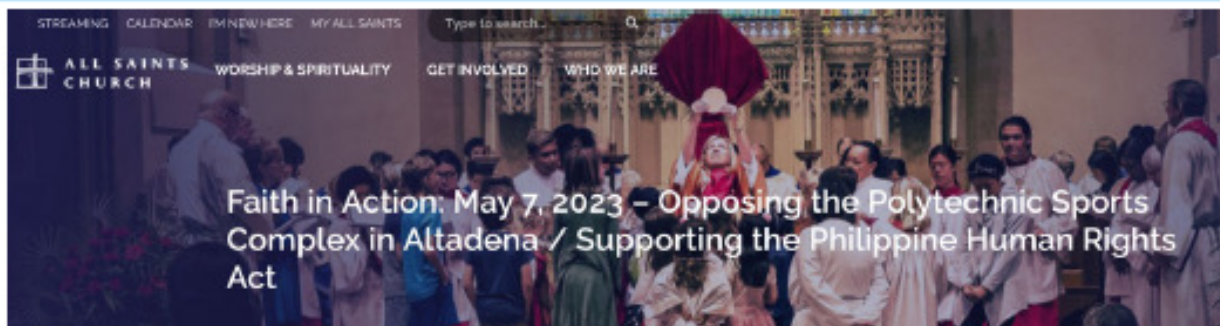
[NEWS](#) [OPINION](#) [FEATURES](#) [MEDIA](#) [LIFESTYLE](#) [SPORTS](#) [ABOUT](#)

Altadena community opposes proposed Poly sports complex

[Home](#) / [Top Stories](#) / [Altadena community opposes proposed Poly sports complex](#)

STREAMING CALENDAR BENEVOLENCE MY ALL SAINTS Type to search...

ALL SAINTS CHURCH WORSHIP & SPIRITUALITY GET INVOLVED WHO WE ARE



Faith in Action: May 7, 2023 – Opposing the Polytechnic Sports Complex in Altadena / Supporting the Philippine Human Rights Act

Poly Quotes

“Poly is committed to being a superb neighbor and steward of this land...” (Oct. 11 letter)

“It is important...that neighbors and other stakeholders play an active role in the effort to ensure the community’s needs and priorities are respected.” (Oct. 11 letter)

“Poly is fully committed to a comprehensive community engagement effort with our neighbors in Altadena that is proactive and transparent at all stages.” (Poly website)

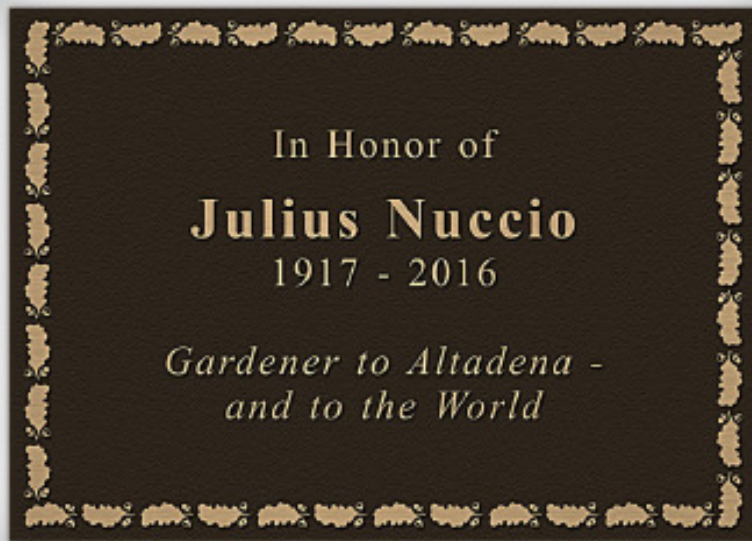
“We are committed to a proactive, inclusive, and transparent process.” (Poly website)

“At every step, Poly will continue to listen closely, working with neighbors and stakeholders who constructively engage to develop a plan in harmony with the community.” (May 3 Bracker letter to Poly community)

The logo for Altadena WILD is a stylized landscape illustration. It features a black silhouette of a bear on the left, a winding path in the center, and a green tree on the right. The background consists of green mountains and a light blue sky. The text "Altadena WILD" is written in white, bold, sans-serif font across the middle of the landscape.

Altadena WILD

www.AltadenaWILD.org



sales@internationalbronze.net



ACONA COMMUNITY QUESTIONS

Nic Arnzen

Since you asked...



Traffic safety - why not light up 4-way stop signs on Mendocino & Holliston like those at Altadena Drive & Allen

Traffic safety - why not light up 4-way stop signs on Mendocino & Holliston like those at Altadena Drive & Allen?

Response from Julian Garcia, Principal Engineer, LA County Public Works:

The County implemented LED stop signs at pilot locations throughout Los Angeles County, including at the intersection of Allen Avenue and Altadena Drive. A post-installation study was completed to evaluate these implementations, which found that there was no significant reduction in traffic collisions or driver approach speeds. The data did show that the number of motorists coming to complete stops at the pilot locations improved.

Based on the results of the study, the County still deploys LED stop signs on a case-by-case basis at locations where the stop signs are not as readily apparent and would benefit from enhanced conspicuity. These locations include abnormally wide stop-controlled intersections or where the visibility of the stop sign is limited due to the alignment of the roadway or presence of obstructions. The intersection of Mendocino Street and Holliston Avenue was recently evaluated for the implementation of LED stop signs and it did not meet the County's current criteria for implementation.

How can we get more info on LA County's Climate Action Plan - Chief Sustainability Office and Community Wildfire Protection Ordinance - Regional Planning?

<https://planning.lacounty.gov/climate-action-and-sustainability/>

https://planning.lacity.org/odocument/657f9e1a-2651-462a-9729-32d1c67b29fe/2022_Revised_Draft_Wildlife_Ordinance_Fact_Sheet.pdf



3) How does Altadena Chamber of Commerce encourage new and different restaurants and businesses to come into town

Response from Judy Mathews: It is the mission of ACOC to offer support to the community, present programs for local businesses and assist new businesses coming into the community. ACOC provides access to valuable resources and can place potential businesses in contact with resources that will help navigate the permit resources.



Questions?



Next ACONA Meetings

- Sept. 26, 2023 Tuesday
- Nov. 29, 2023 Wednesday

